



Session 2.2

No Country for Old Men:
Planning, designing and
managing urban forests to
make them more accessible
and inclusive

Chair: Phil Rodbell



**World Forum on
Urban Forests**



2nd World Forum on Urban Forests

Washington DC, 2023

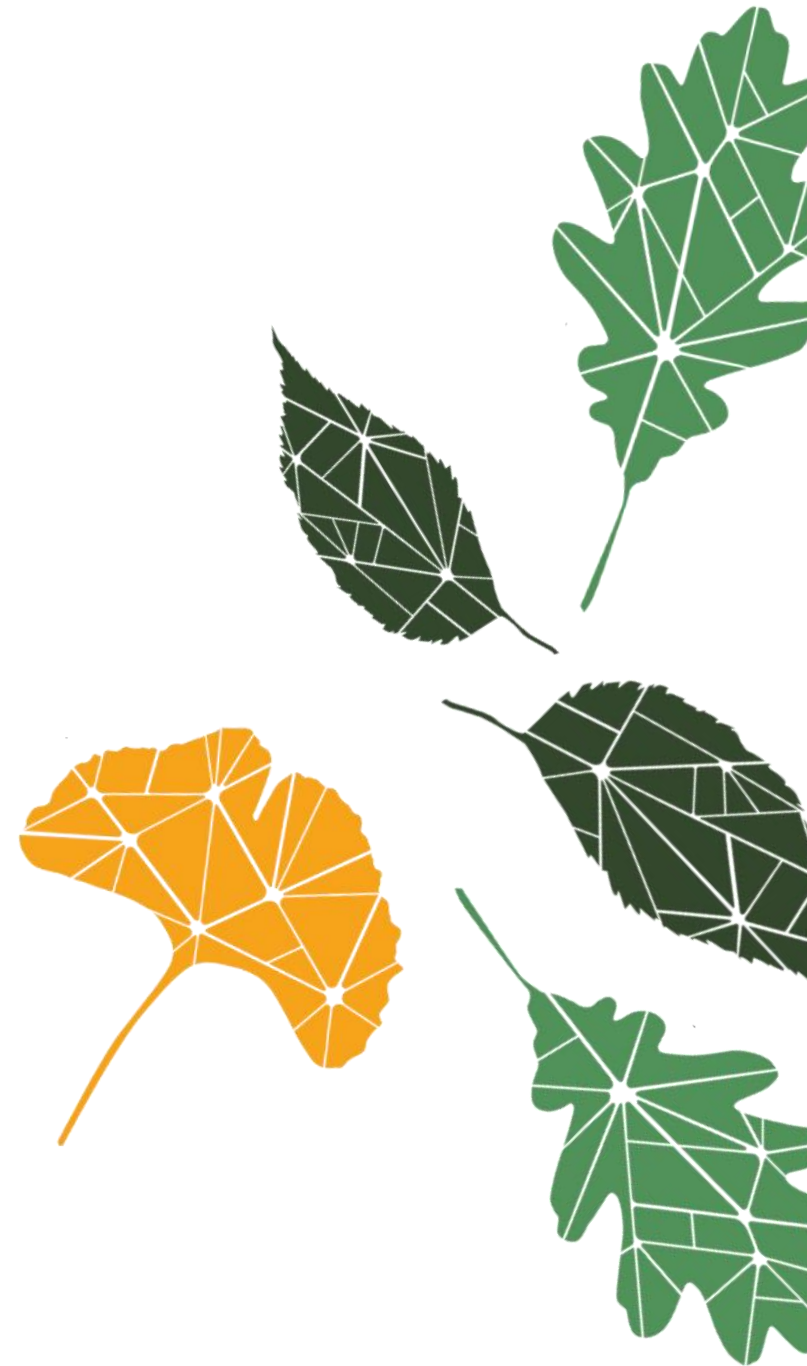
New concepts for inclusive and
meaningful urban forestry

Groves, Streetwoods,
and Doorstep Trees

Presented by

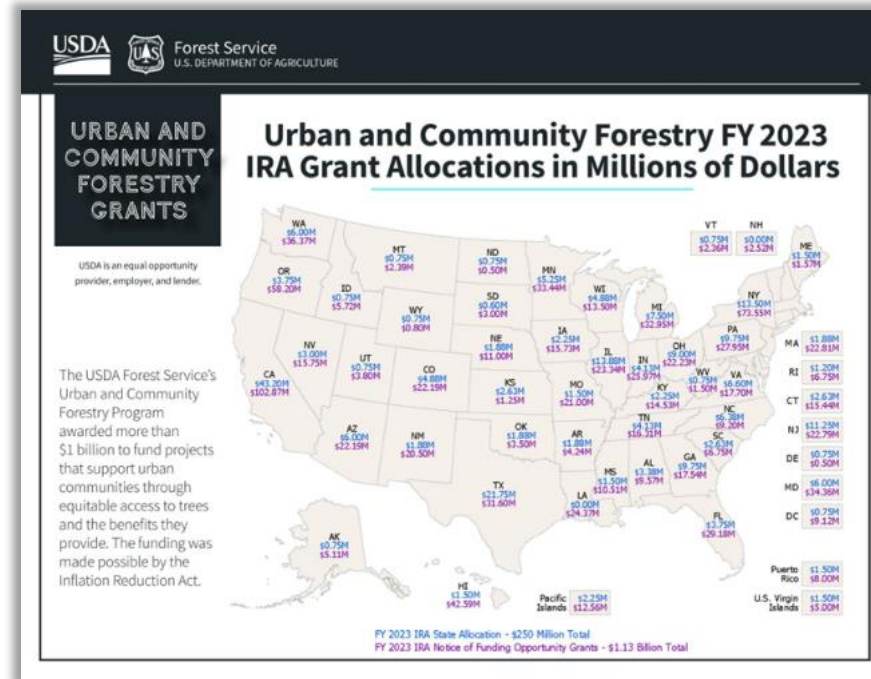
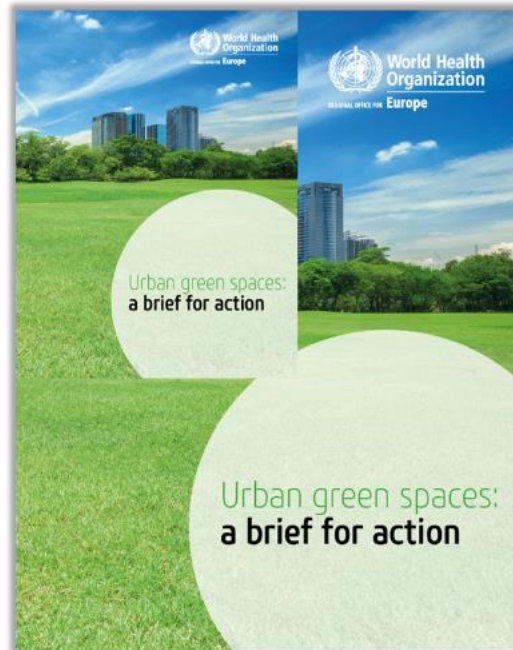
Cecil Konijnendijk

Nature Based Solutions Institute





**It's time for
Tree Equity.**



Principles for Urban Forest Planning

- Proximity (and visibility)
- Connectivity
- Diversity
- Equity

 Nordic Council
of Ministers

Policy Brief

Nordic Cities: Green, Resilient, Healthy

Fostering national policies and
initiatives for urban green space



2nd World Forum on Urban Forests

Washington DC, 2023

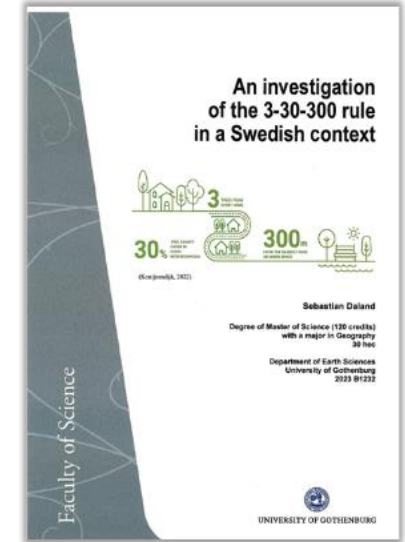
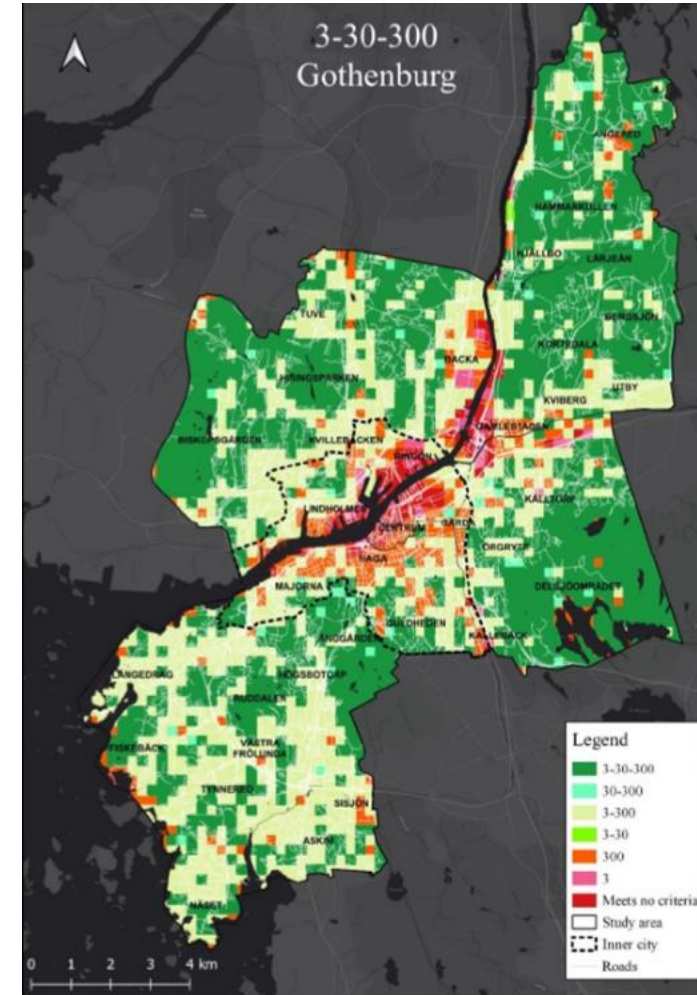
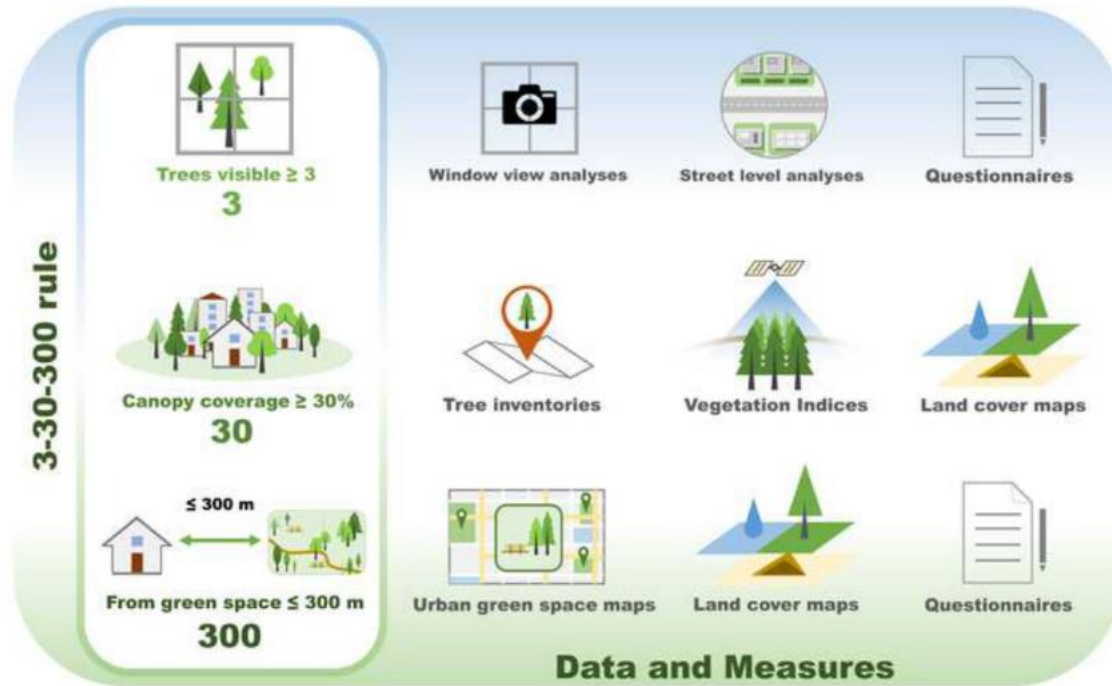
UBC Alumni Magazine, 2022





2nd World Forum on Urban Forests

Washington DC, 2023

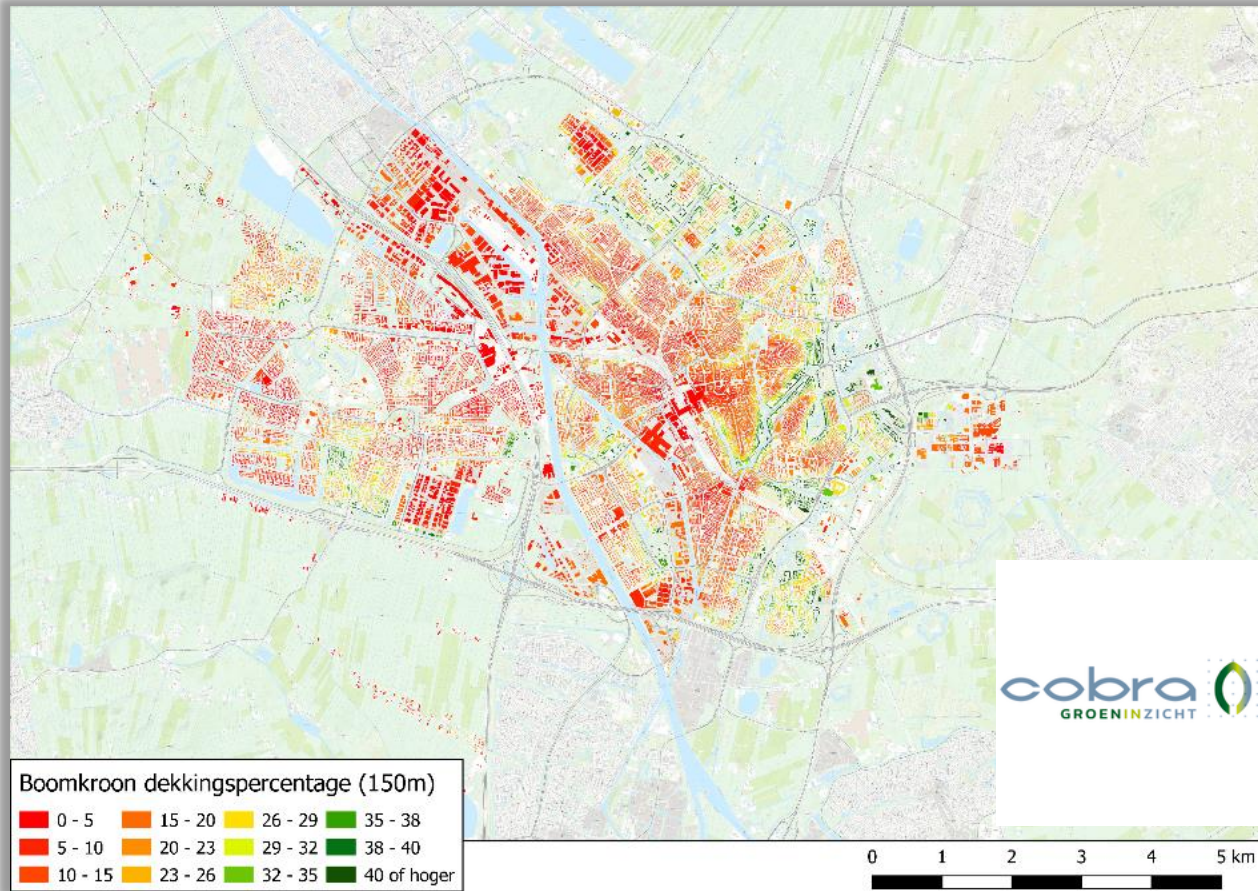


Browning et al. (in review)



2nd World Forum on Urban Forests

Washington DC, 2023





2nd World Forum on Urban Forests

Washington DC, 2023

The
Guardian

The study also found that more tree and grass cover in a neighbourhood was associated with less demand for GP and hospital visits. This was especially true of cities and accords with [wider evidence](#) on green space in urban areas.

The World Health Organization already recommends that we have access to [0.5 hectares \(1.2 acres\) of public green space](#), about [two-thirds the size of a football pitch](#), within 300 metres of our homes.

The urban forester [Cecil Konijnendijk](#) recently suggested a [3-30-300 rule of thumb](#) for urban forestry and urban greening - every citizen should be able to see at least three trees (of a decent size) from their home, have 30% tree-canopy cover in their neighbourhood and not live more than 300 metres from a park or green space.

Pollutionwatch
Air pollution

Why a Belgian insurer studies the impact of air pollution on health

Mutualités Libres says improving air quality ensures sustainability of the social security system

Gary Fuller

@drgaryfuller

Fri 22 Sep 2023 07:00 CEST



7



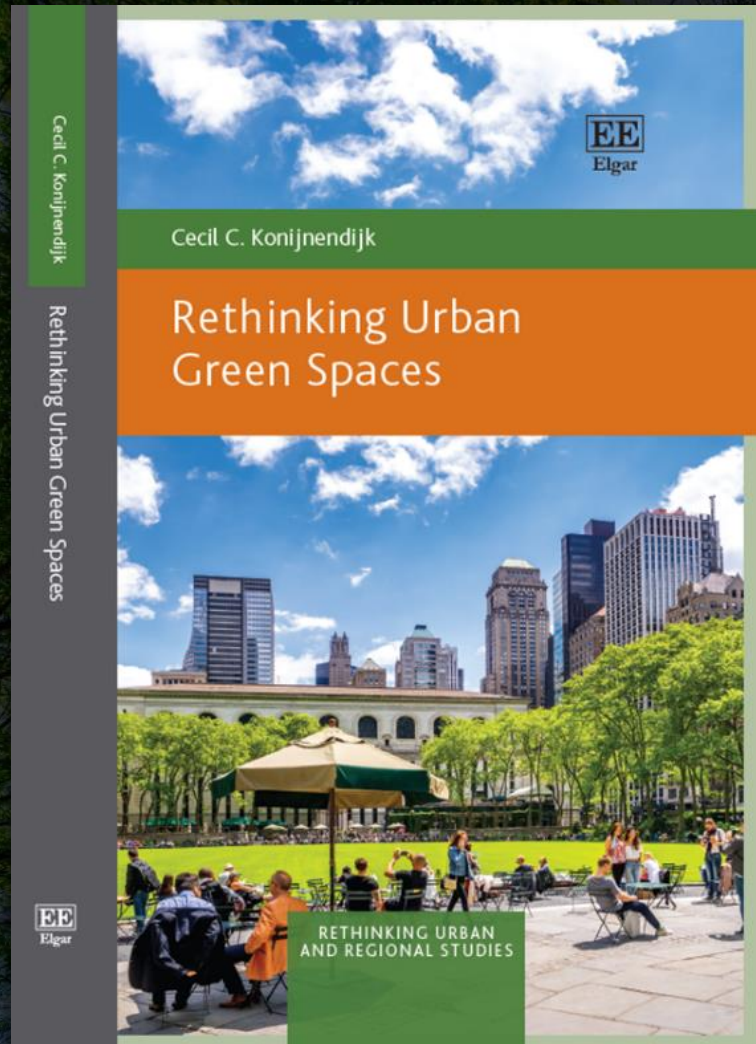


Table of contents

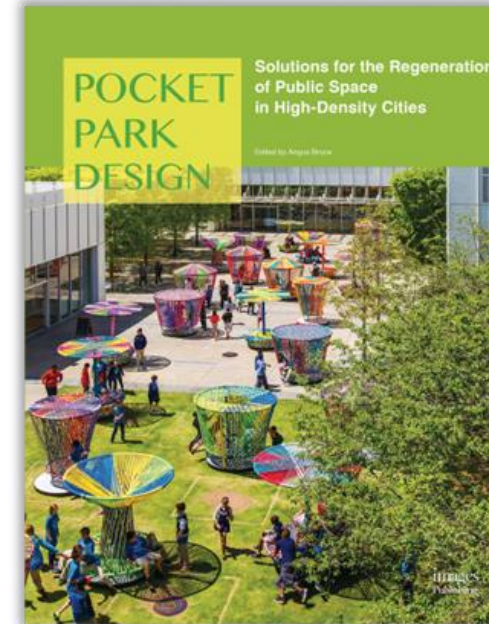
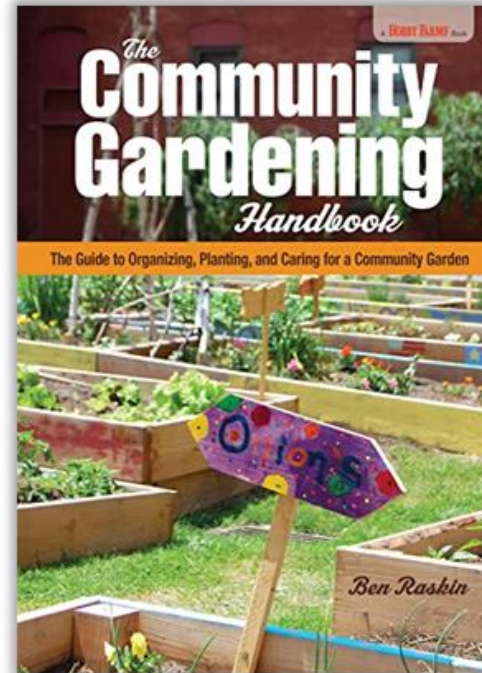
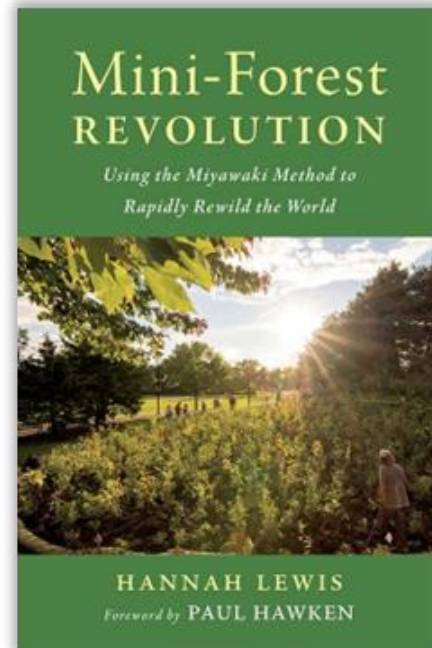
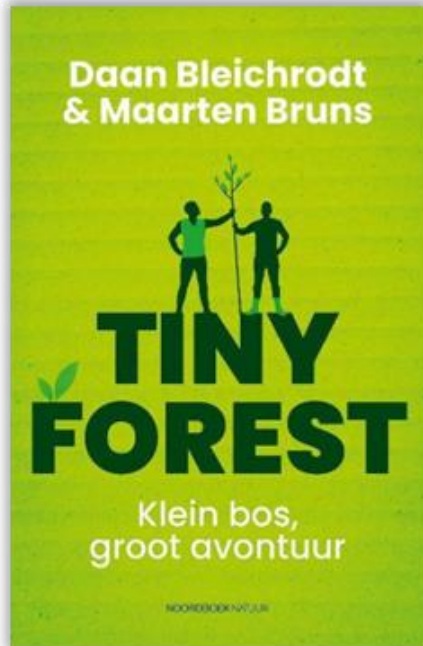
Preface

1. Urban Green Space: Why Rethinking is Needed
2. Urban Green Spaces Until Today
3. Urban Green Space Use in Transition
4. Design and Transformation of Green Spaces
5. Green Space Management for Today and Tomorrow
6. Changing Governance of Green Spaces
7. Planning and Integration of Urban Green Spaces
8. Securing and Diversifying Funding for Green Spaces
9. Shifts in Urban Green Space Narratives
10. Perspective: Streetwoods, Urban Groves and More Rethinking of Urban Green Spaces



2nd World Forum on Urban Forests

Washington DC, 2023



BOSK



<https://lc.nl/friesland/leeuwarden/Het-stationsplein-in-Leeuwarden-kleurt-groen.-Bekijk-hier-het-wandelende-bos-Bosk-vanuit-de-lucht-27665133.html>



Three Concepts for Building Connections and Stewardship

Neighbourhood – Street – Home

Community – Neighbours – Family





Urban Groves

- Inspired by the sacred and academic groves of the past
- Urban woods with meaning
- Special wooded places, community connection
- Spirituality and learning
- Community, commemoration, celebration
- Neighbourhood and community focus
- Link to the '300' (and the '30') component





Streetwoods

- Your street can be a forest
- Public and private trees
- Fading boundaries
- Community stewardship and pride
- Municipal and not-for-profit support
- Element of friendly competition ('streets in leaf' rather than 'communities in bloom')
- Street, block and neighbour focus
- Link to the '30' (and the '3') component





Doorstep Trees

- It starts with a tree – at our doorstep, in our garden, along our street
- We do a bit more for our tree
- We follow our tree and its visitors throughout the year
- The tree becomes part of our family
- Individual home and family focus
- Link to the '3' (and the '30') component

Illustration credit: Ann Van
Herzele

**A TREE ON YOUR DOORSTEP,
A FOREST IN YOUR MIND**





Re-entanglement with Trees

- From city and neighbourhood to individual homes, we need to bring trees back into our lives.
- Planning principles and guidelines such as 3:30:300 can help, also across scales.
- For building connection and stewardship, we need to create meaningful tree places
- *Urban Groves*, *Streetwoods*, and *Doorstep Trees* can help in re-entanglement between people and trees



Photo: Johan Östberg





Thank you

Cecil Konijnendijk
Nature Based Solutions Institute

✉ cecil@nbsi.eu



Food and Agriculture
Organization of the
United Nations



2nd **World** **Forum on** **Urban** **Forests**

2023



**World Forum on
Urban Forests**



2nd World Forum on Urban Forests

Washington DC, 2023

Session 2.2: Planning, designing and managing urban forests to make them more accessible and inclusive

Why civic stewardship matters: Insights from 15 years of studying local environmental care and action



Presented by

Erika S. Svendsen (presenter), Lindsay K.
Campbell and Michelle L. Johnson

USDA Forest Service, Northern Research
Station





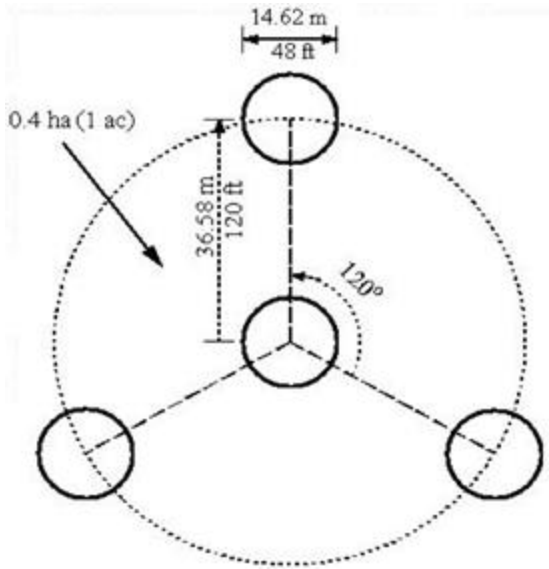
**Do you have a “go to” resource to
identify partners who are working
across your region?**





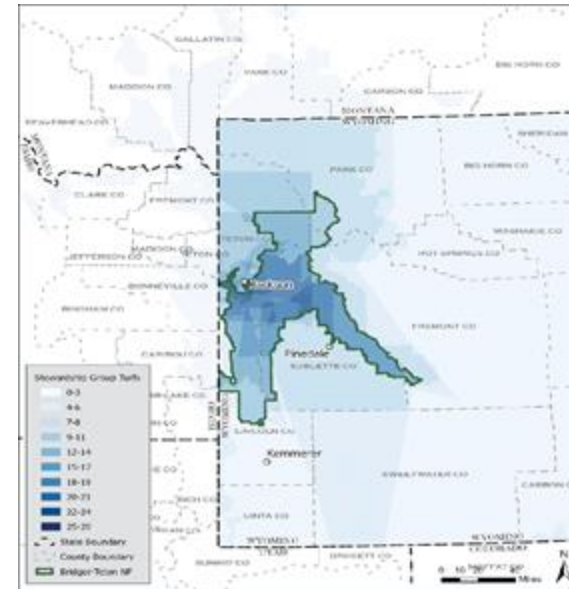
Making partnerships visible with the same care & precision that we monitor and care for our natural resources

Forest Inventory and Analysis



(Standard FIA plot design)

Stewardship Mapping and
Assessment Project



(Bridger-Teton National Forest STEW-MAP 2021)

What can you learn from tracking partners and activities?

- Who is participating?
- How are they participating?
- Where are they participating?
- What is their effect on the environment and communities?
- Where are there gaps in the landscape?

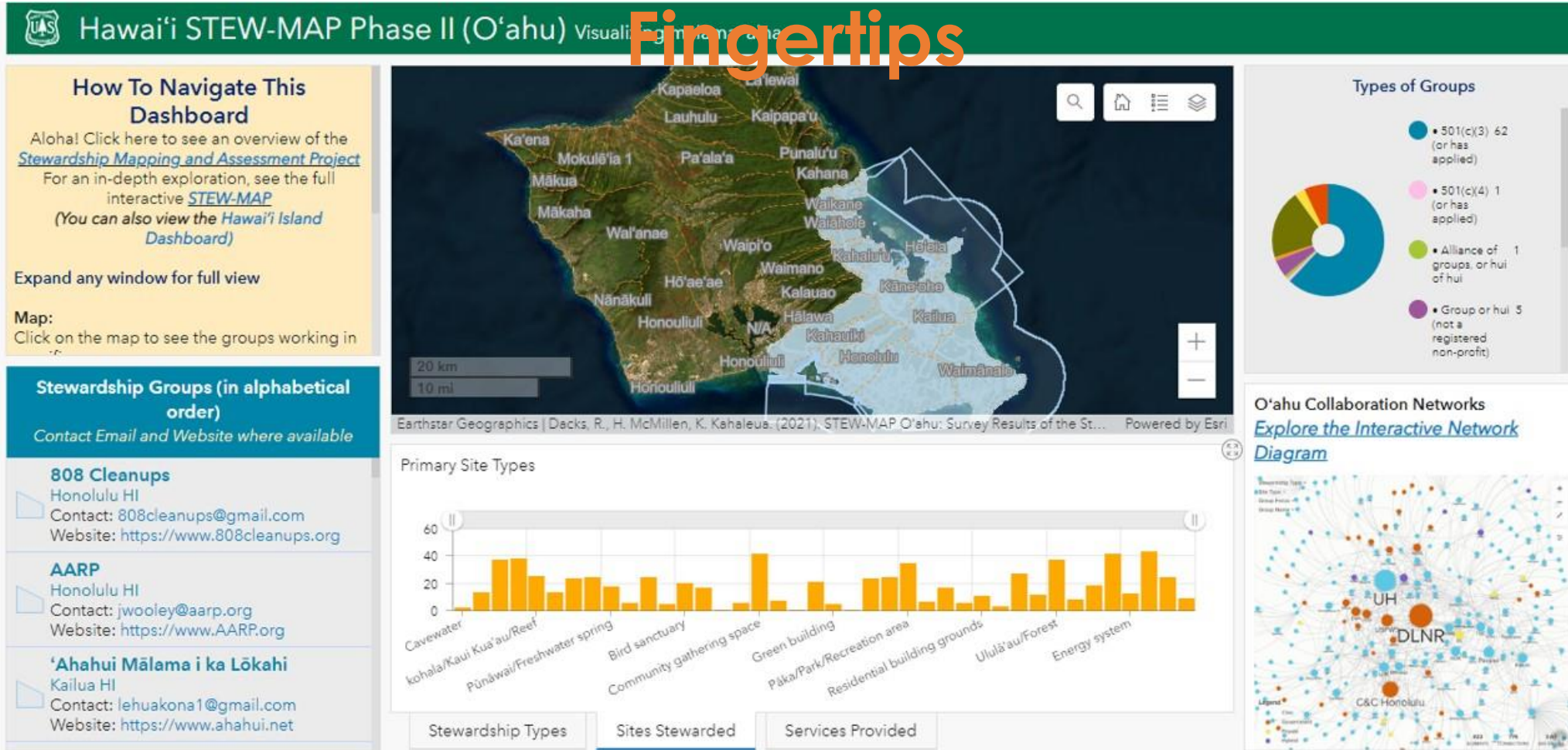




2nd World Forum on Urban Forests

Washington DC, 2023

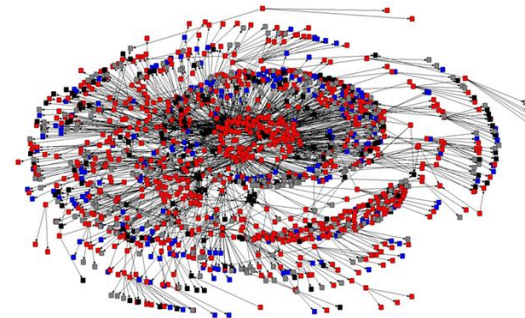
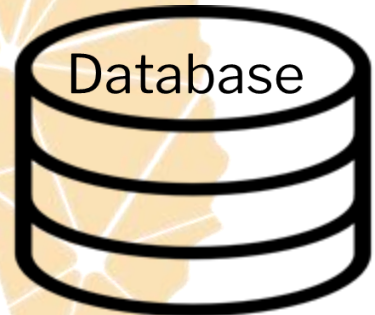
Stewardship Data At Your Fingertips





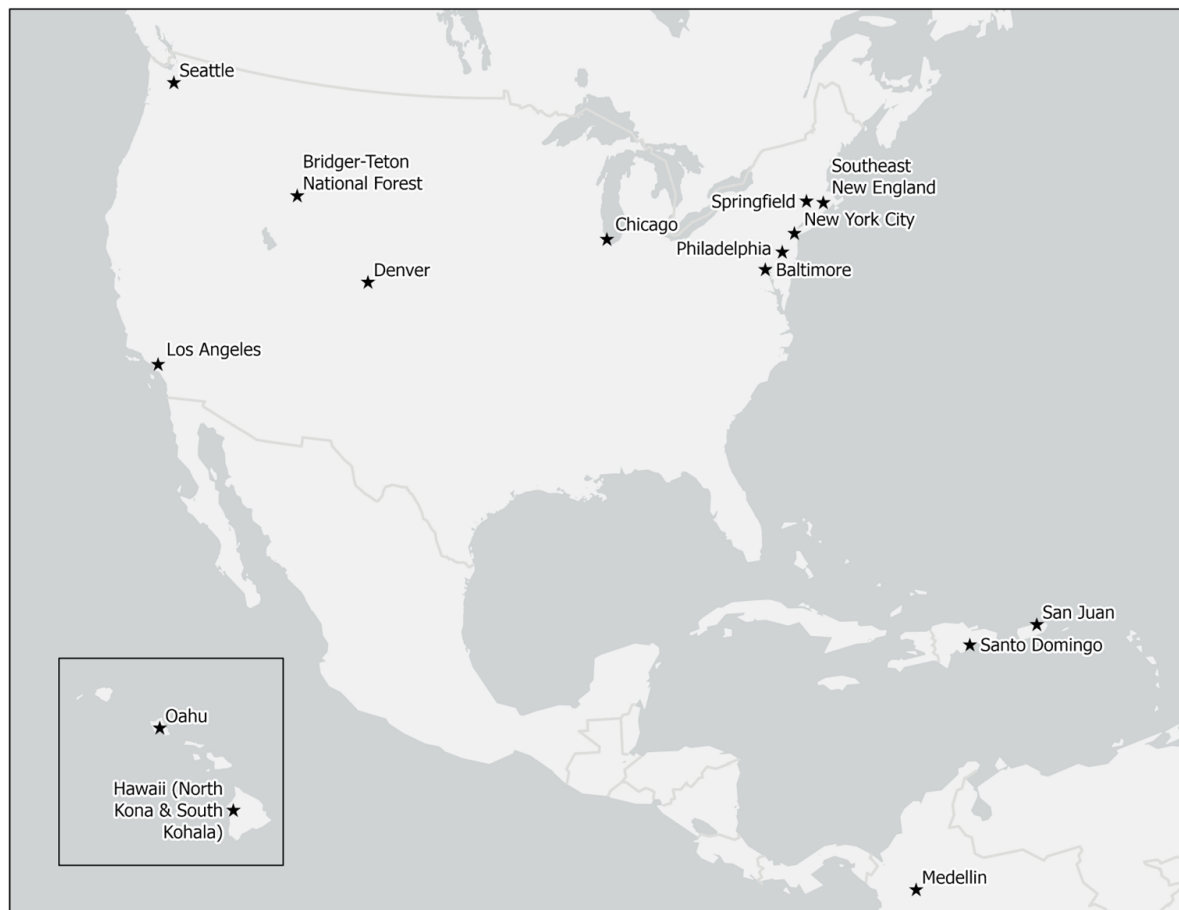
The STEW-MAP Approach

- Survey and interview-based methodology
- Measures how, where, and why civic groups and partners care for local ecosystems
- Began in New York City in 2007 – now in more than 15 locations





Lessons Learned from Many Parts of the World



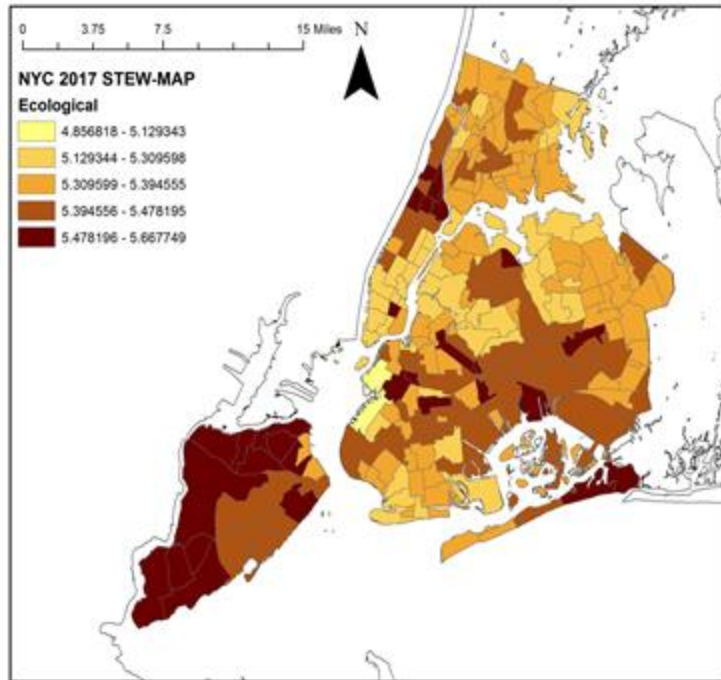


Stewardship capacity exists across the spectrum from grassroots to professionalized groups

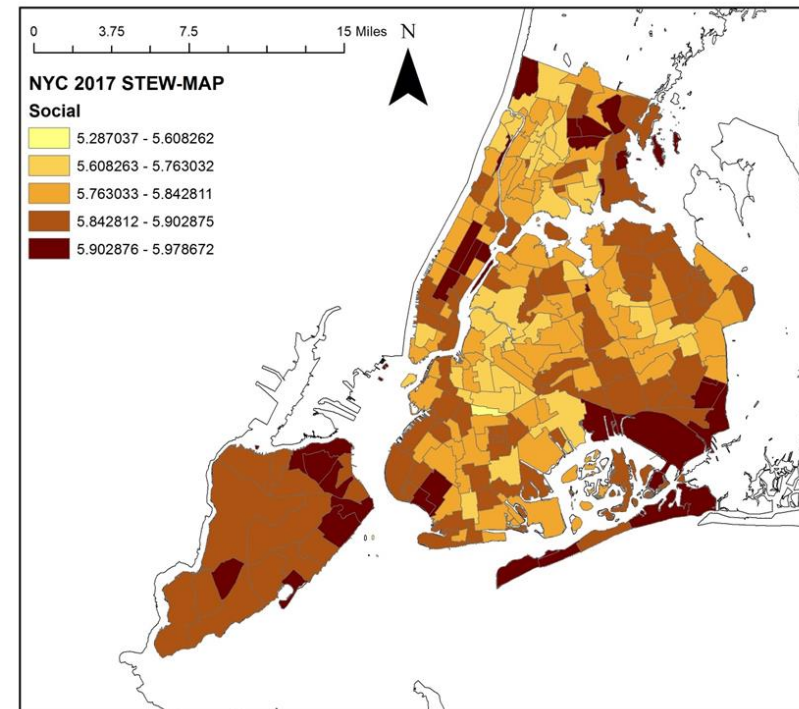




Stewards are agents of change, socially and ecologically

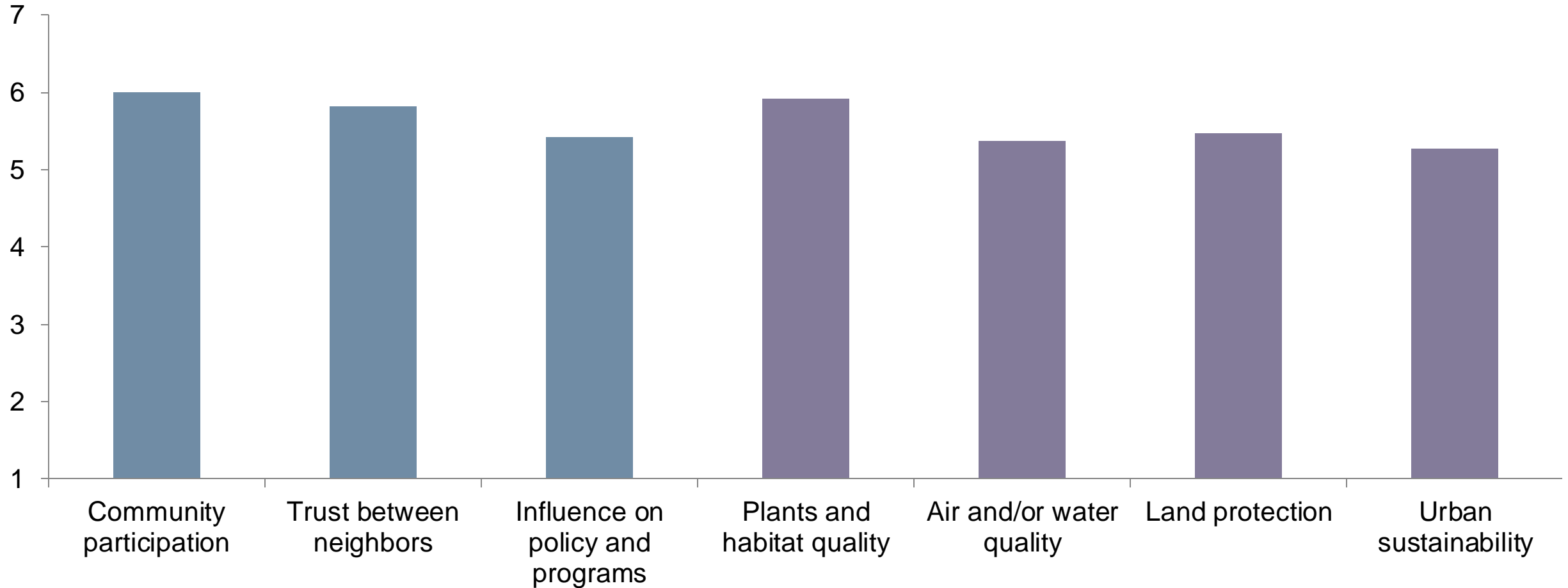


Ecological Outcomes



Social Outcomes

Perceived Outcomes



Social

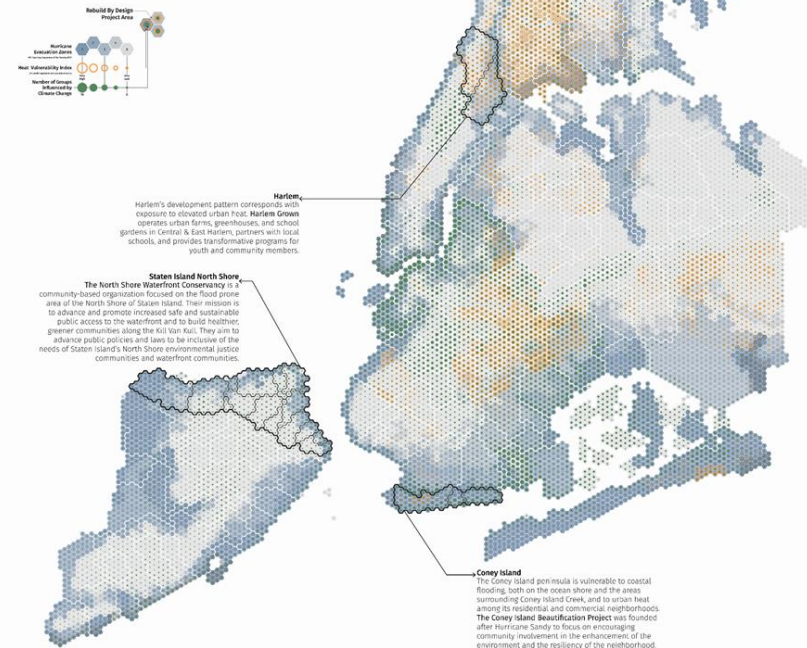
Environmental

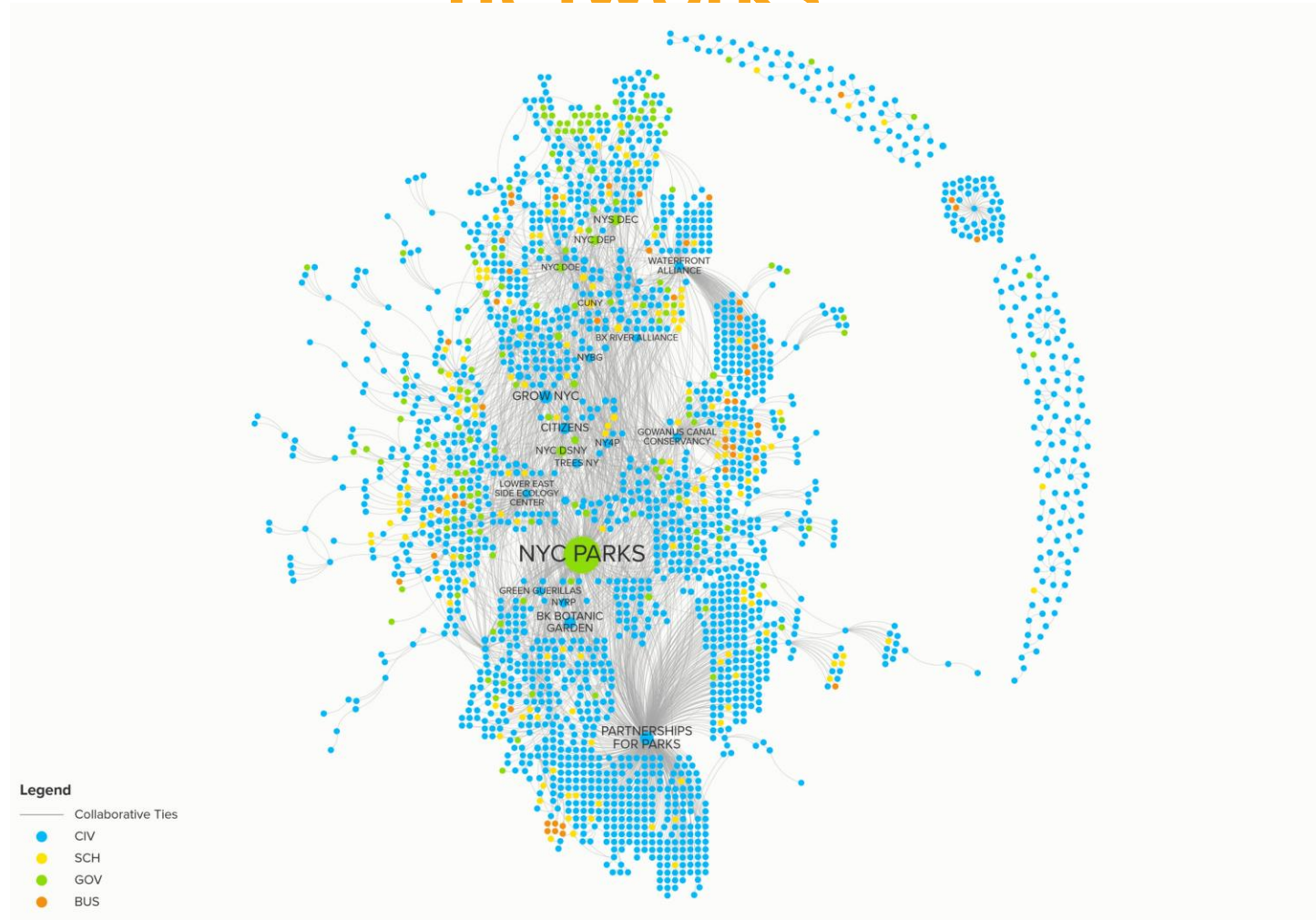


Stewards respond to disturbance and foster social-ecological resilience.

CLIMATE CHANGE

Our changing climate has multiple impacts, including more intense coastal flooding and an increase in the heat island effect. Stewardship groups are on the front lines of observing these impacts, adapting to change, and enhancing the ecological function of sites.







Synthesis and Application for Urban Forestry

Supporting human capacity:

Whatever the desired ecological outcome these ends require human capacity and care.

Network building is needed turn insights from stewardship mapping into action.

Strengthening knowledge exchange: among a diverse community of stewards and land managers is crucial success.





And a special thanks to my co-authors....

Lindsay K. Campbell (lead author), Michelle L. Johnson, Dexter H. Locke, Nancy Sonti, J. Morgan Grove, Michele Romolini, Heather McMillen, Rachel Dacks, Bryce DuBois, Jesse Sayles, Tischa Muñoz-Erickson, Laura Landau, Lorien Jasny, Krista Heinlen, Maria Arroyave, Camille McCarthy, Dave Bloniarz, Brian A. Goldberg, Gerald P. Bauer, Travis Warziniack





Thank you

Erika Svendsen USDA Forest Service

erika.svendsen@usda.gov



www.fs.usda.gov/research/projects/stew-map



Food and Agriculture
Organization of the
United Nations



2nd **World** **Forum on** **Urban** **Forests**

2023



**World Forum on
Urban Forests**



2nd World Forum on Urban Forests

Washington DC, 2023

Planning for Equitable Urban Tree Cover within Urban Forest Management Plans: *A Case for Environmental Justice*

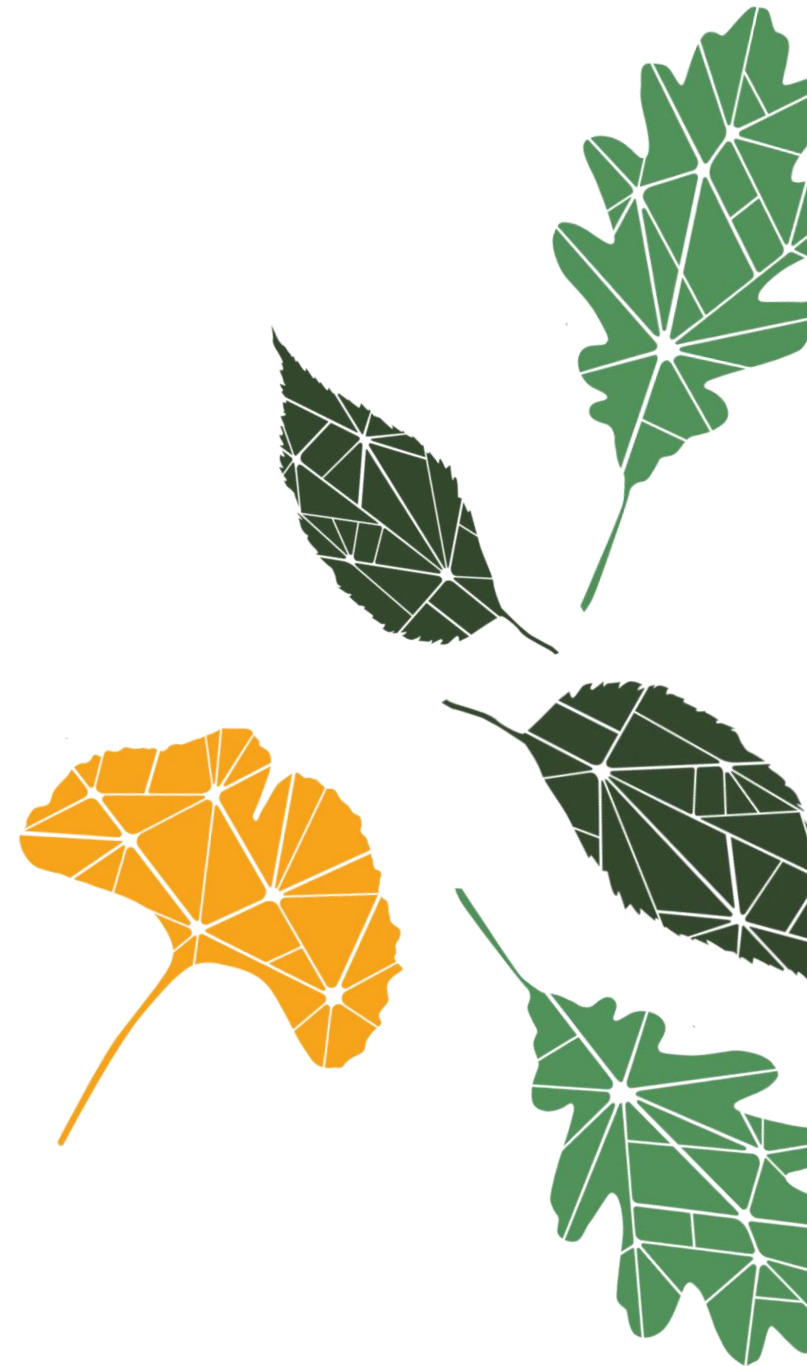


Presented by

Joelle McNeil, PhD Candidate,
School of Planning, University of Waterloo, ON

Dr. David J. Nowak, (retired), Senior Scientist, U.S.D.A. Forest Service, i-Tree
Project, Petersburg, New York

John McNeil, R.P.F., Principal, McNeil Urban Forestry Inc.,
Burlington, ON



About this Talk

1. Tree Equity at City of Waterloo

- Waterloo Urban Forest Management Strategy (UFMS)

2. Distribution of urban tree cover

- Partnership with the University of Waterloo (UW), School of Planning

3. 3-Pillar Framework of Environmental Justice

- Procedural
- Distributional
- Recognition



The Project: Waterloo's UFMS

Project Objective: “Review and analyze existing development standards and practices with consideration given but not limited to: Equitable distribution of the urban forest across the City of Waterloo”





**2nd World Forum on
Urban Forests**

Washington DC, 2023

Canada's Urban Forests Bringing the Canopy to All

September 2022



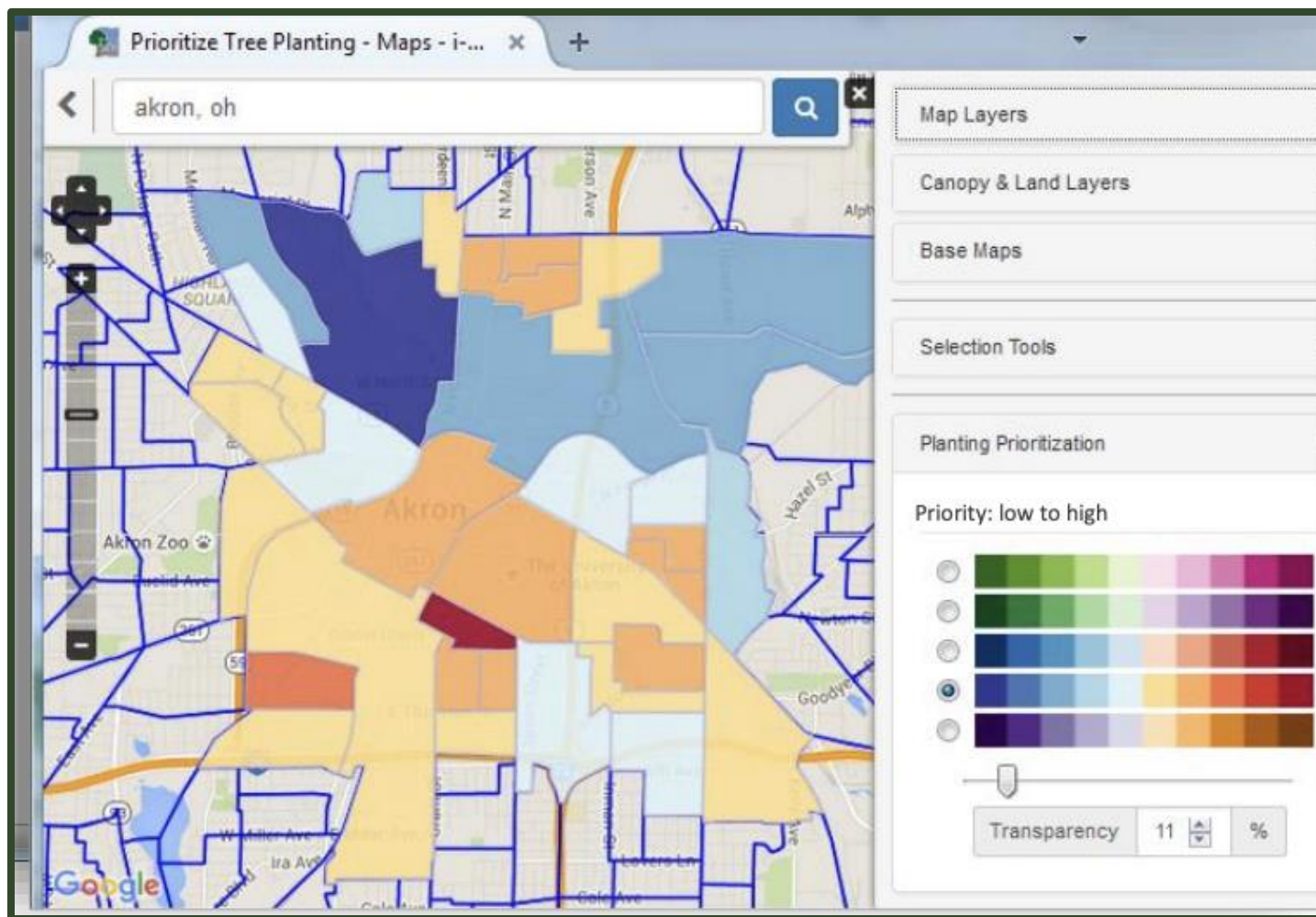
Interdisciplinary Collaboration

UW Planning Student Term Project:

- analyze i-Tree canopy data + population data
- produce neighborhood map + recommendations



Tree Planting Prioritization Map



TPPM Indicators:

1. Geographic Location
2. Urban Tree Cover
3. Impervious Cover
4. Population Density
5. Income
6. Race/ethnicity



Inequality

Unequal access to opportunities



With apologies to Shel Silverstein from @lunchbreak

2019 Design In Tech Report | Addressing Imbalance

Equity

Custom tools that identify and address inequality



With apologies to Shel Silverstein from @lunchbreak

2019 Design In Tech Report | Addressing Imbalance

Equality?

Evenly distributed tools and assistance

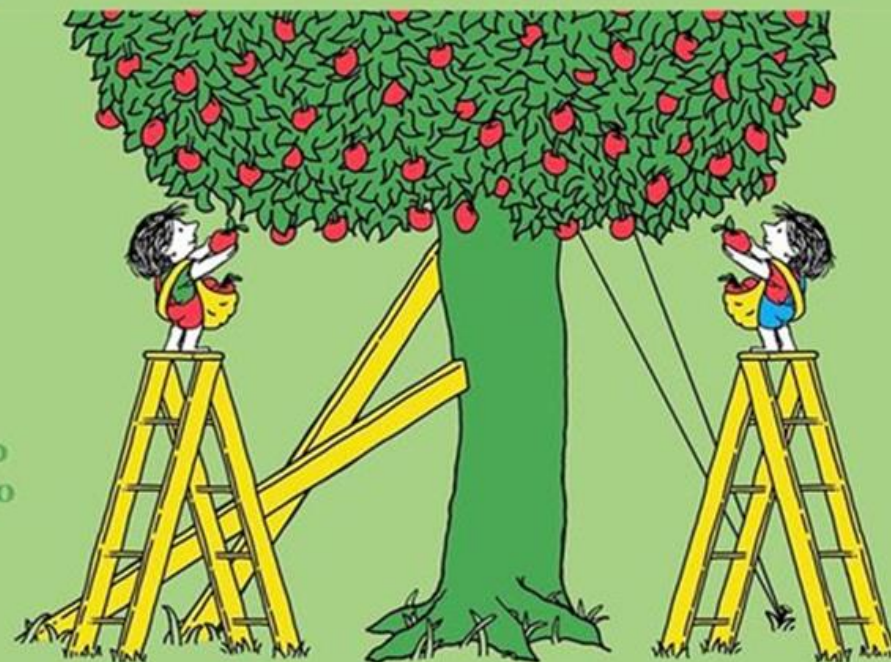


With apologies to Shel Silverstein from @lunchbreak

2019 Design In Tech Report | Addressing Imbalance

Justice

Fixing the system to offer equal access to both tools and opportunities



With apologies to Shel Silverstein from @lunchbreak

2019 Design In Tech Report | Addressing Imbalance

3-Pillar Framework



recognitio
n justice



procedura
l justice



distributio
n justice



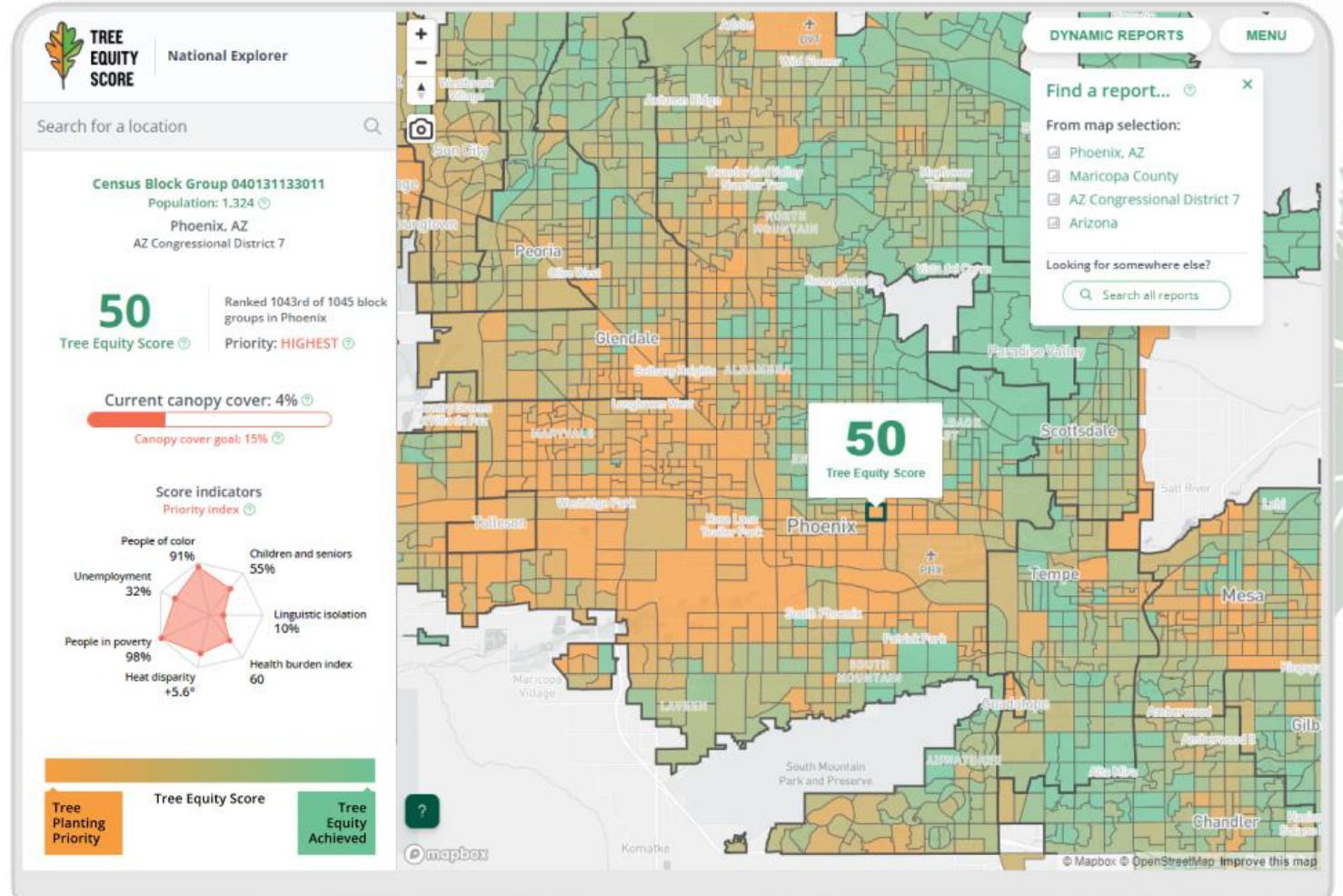
Environmental Justice



Distribution Justice

Tree Equity Score Indicators:

1. Geographic Location
2. Urban Tree Cover
3. Impervious Cover
4. Population Density
5. Income
6. Race/ethnicity
7. Climate
8. Health



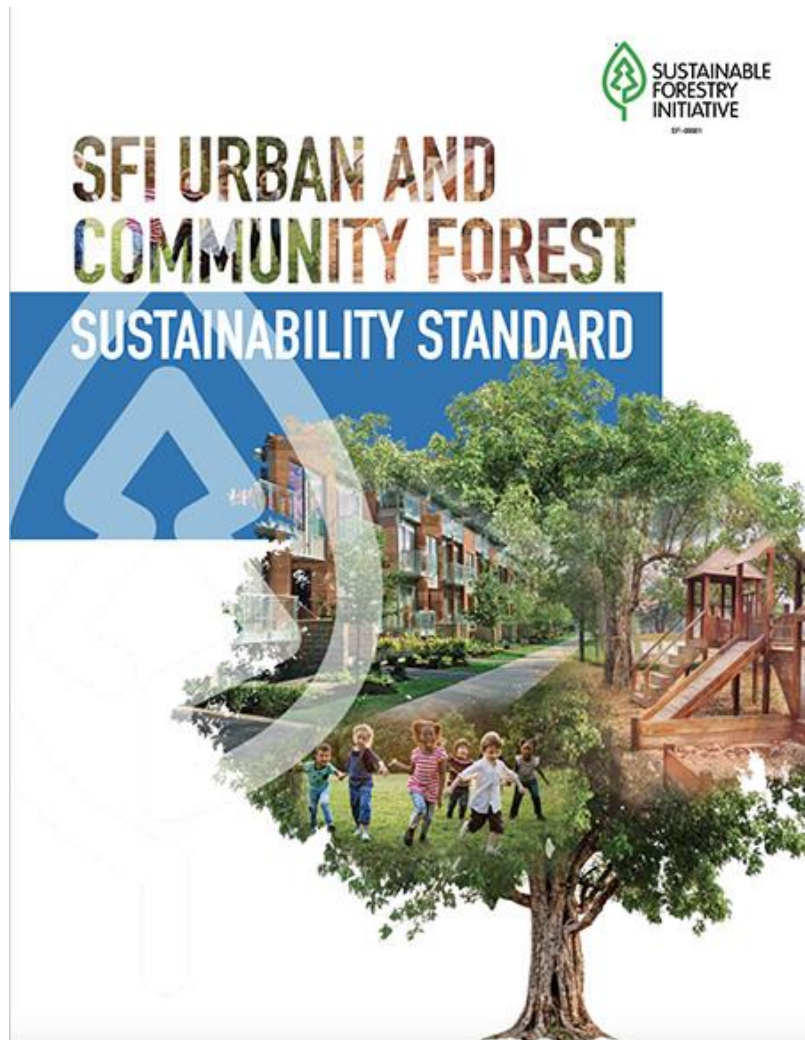


**2nd World Forum on
Urban Forests**

Washington DC, 2023

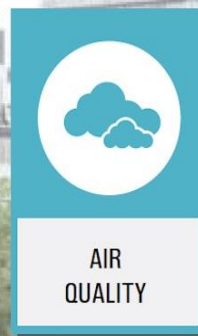


Procedural Justice



TORONTO GREEN STANDARD

v4
2022



AIR
QUALITY



BUILDING ENERGY,
EMISSIONS &
RESILIENCE



WATER QUALITY
&
EFFICIENCY



ECOLOGY &
BIODIVERSITY



WASTE & THE
CIRCULAR
ECONOMY

SUSTAINABILITY REQUIREMENTS FOR
NEW DEVELOPMENT IN TORONTO



**2nd World Forum on
Urban Forests**

Washington DC, 2023



Recognition Justice



Conclusions



recognitio
n justice



procedura
l justice



distributio
n justice



Environmental Justice



Thank you

Joelle McNeil, David Nowak, John McNeil

✉ jcmcneil@uwaterloo.ca

✉ john@mcneilurbanforestry.ca



Food and Agriculture
Organization of the
United Nations



2nd **World Forum on Urban Forests**

2023



**World Forum on
Urban Forests**



2nd World Forum on Urban Forests

Washington DC, 2023

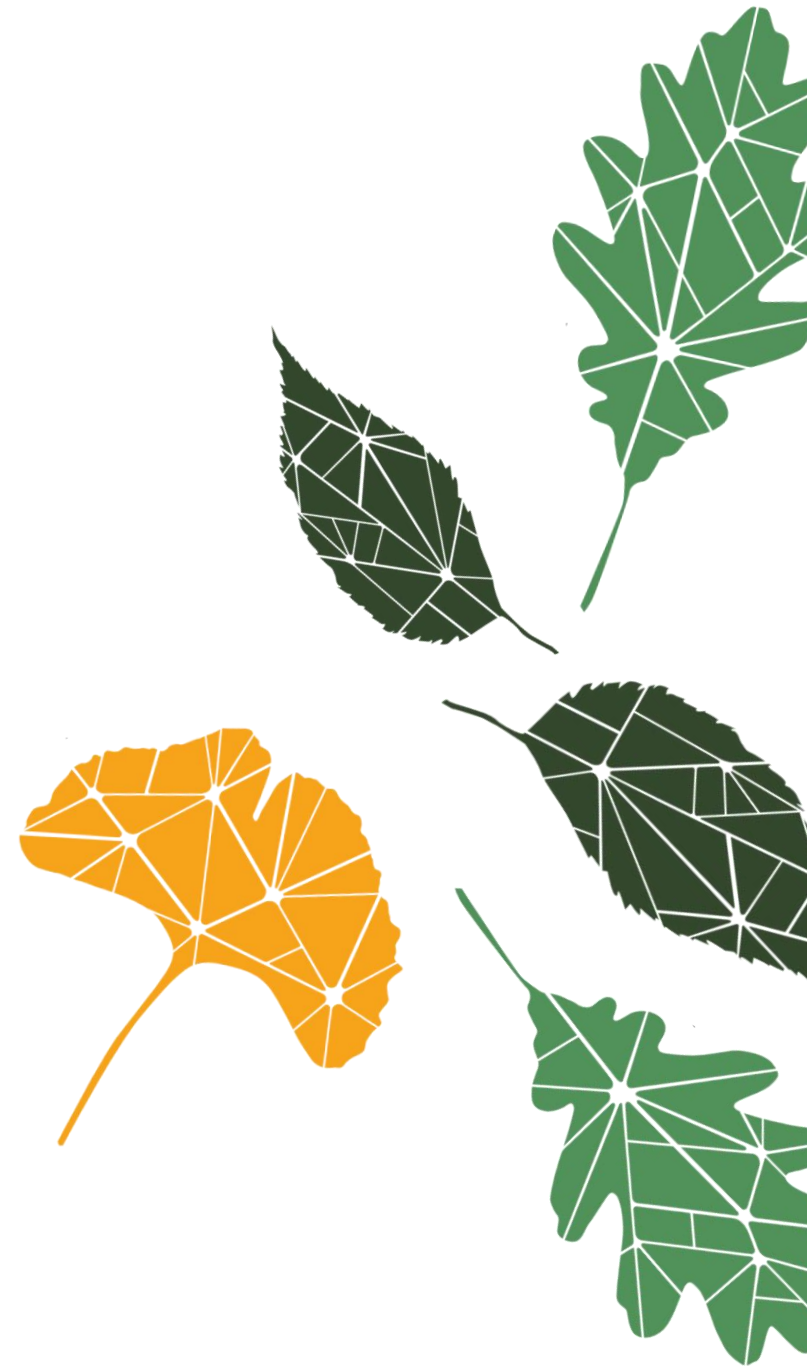
Urban Forest Ecosystem Services and Stewardship: Case Studies from Mexico and Colombia



Presented by

María Arroyave, Arantxa Zamora
& Fabiola López

U.S. Forest Service – International Programs



Introduction

→ i-Tree

→ STEW-MAP





i-Tree Tools

- Tools for an integral assessment of urban forests
- For international use:



- i-Tree Canopy
- i-Tree Eco
- My Tree
- i-Tree Database



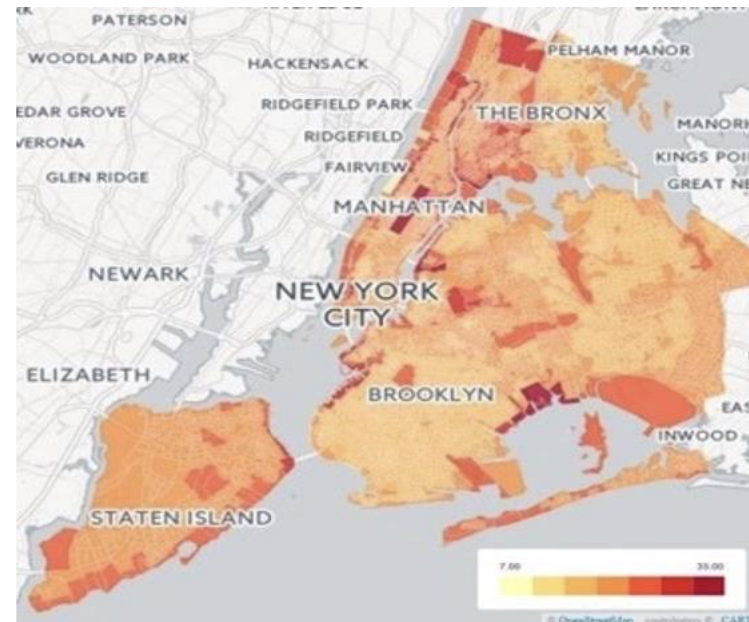
Information useful for:

- Strategic management of urban trees
- Promote the value of trees and community engagement



Stewardship Mapping and Assessment Project (STEW-MAP)

- Survey and interview-based methodology
- Began in New York City in 2007 – Now in more than 15 locations
- Measures how, where, and why civic groups and partners care for local ecosystems



i-Tree and STEW-MAP

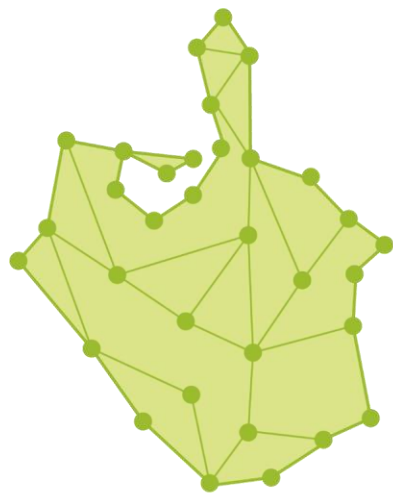
How We Can Integrate These Tools To Find Urban Oasis: Mexico Case





2nd World Forum on Urban Forests

Washington DC, 2023



STEW-MAP La Paz

Conectando a la comunidad con la naturaleza





**2nd World Forum on
Urban Forests**

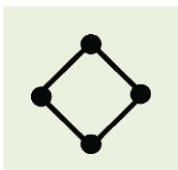
Washington DC, 2023

STEW-MAP Survey La Paz

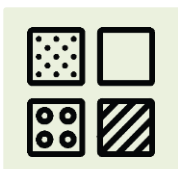
Create a spatial directory that
displays:



Civil groups, collectives, NGOs,
and government organizations



Work areas



Types of stewardship activities
Interests



Impacts

STEW-MAP La Paz: conectando a la comunidad con la naturaleza

Bienvenido a la encuesta STEW-MAP La Paz: conectando a la
comunidad con la naturaleza



STEW-MAP es una herramienta que busca la colaboración entre actores para cuidar el ambiente local, y se ha desarrollado en 15 regiones a nivel mundial, incluidas ciudades latinoamericanas como San Juan, Puerto Rico; Valledupar y Medellín, Colombia; y Lima, Perú, para obtener más información puede visitar: <https://www.fs.usda.gov/research/projects/stew-map>.

La Sociedad de Historia Natural Niparajá, con el apoyo de investigadores del Servicio Forestal de los Estados Unidos, estamos desarrollando esta herramienta en La Paz, a través del proyecto STEW-MAP La Paz: conectando a la comunidad con la naturaleza, con el podremos conocer las acciones que se realizan para cuidar el ambiente local en la ciudad de La Paz, quiénes las realizan, y dónde; con el objetivo es crear vínculos y promover acciones para el bien comunitario y de la naturaleza.

Con este objetivo, si usted realiza acciones en beneficio de la naturaleza, le invitamos a esta encuesta. Para responder esta encuesta, no es necesario que las actividades sean su enfoque principal, ya que pueden ser guardianes de la naturaleza de diversas maneras o atender otros temas principales.

Si prefiere responder las preguntas de la encuesta STEW-MAP de manera presencial o vía telefónica, por favor contacte a: Nicole Harmelin nharmelin@niparaja.org

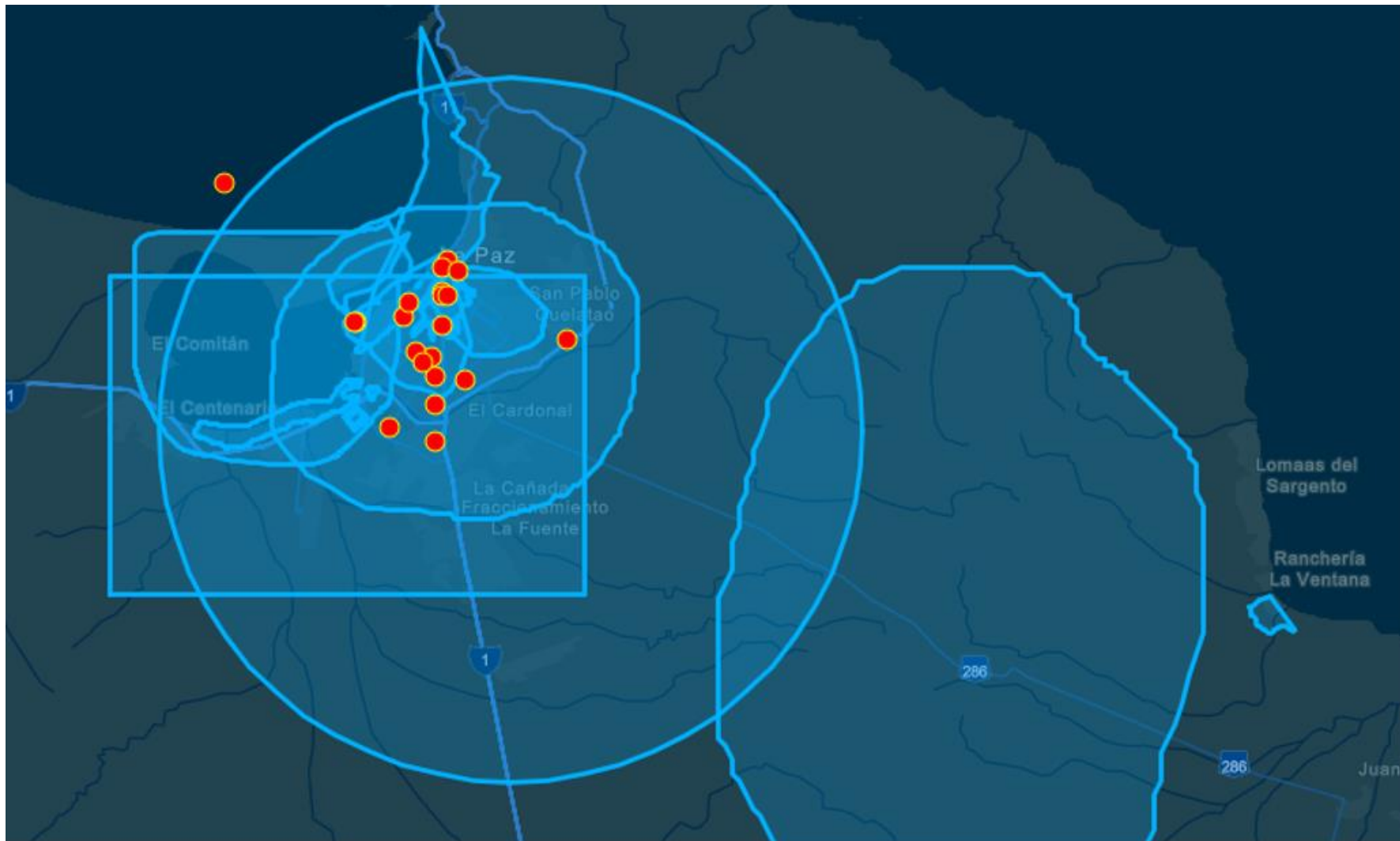
¡Gracias por su participación!



SCAN ME



Areas of Stewardship



25% Educate
and connect
with the
public
Community work and
capacity development

18% Monitor

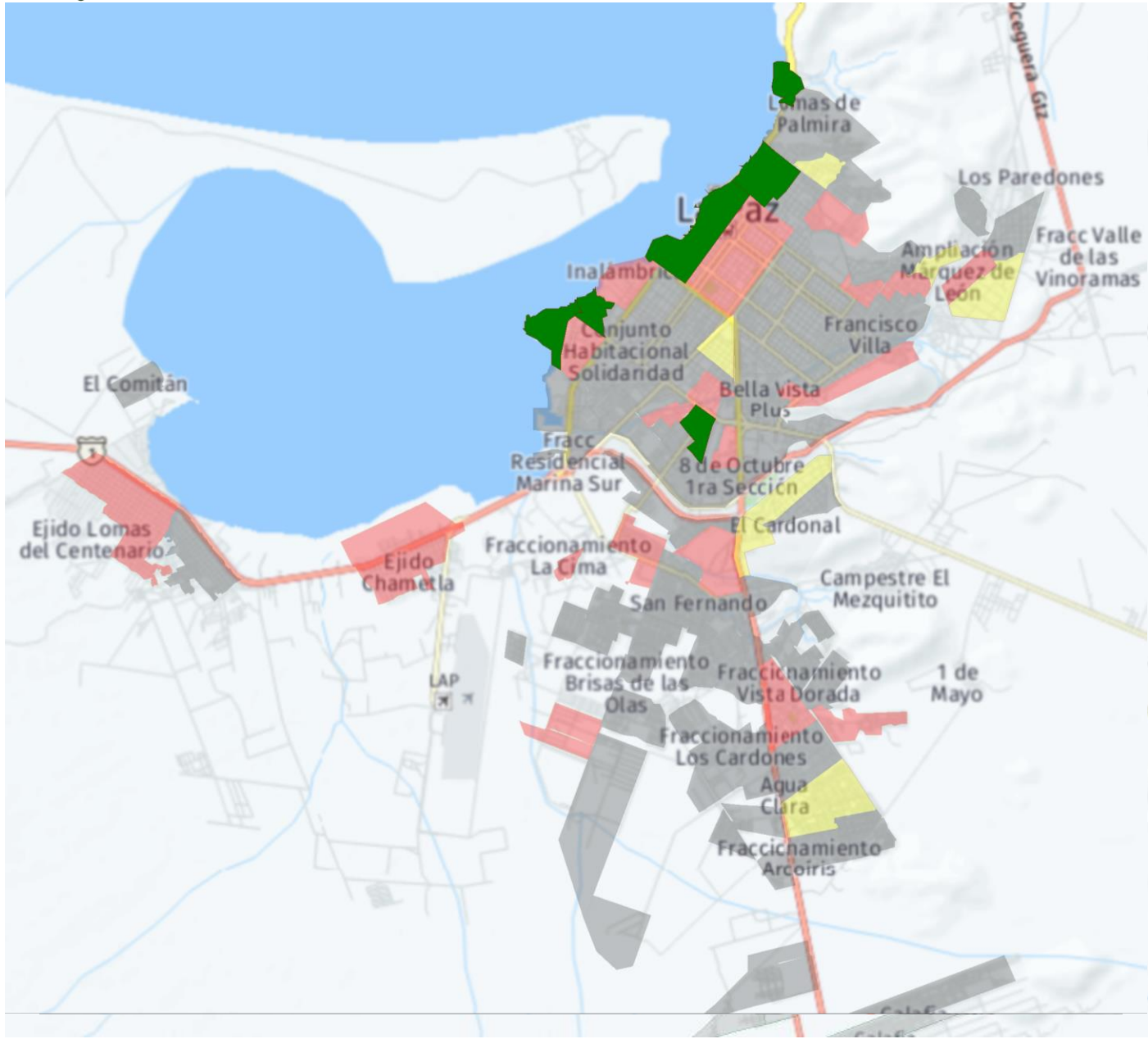
18%
Advocacy
39% Others

Precise, easy access

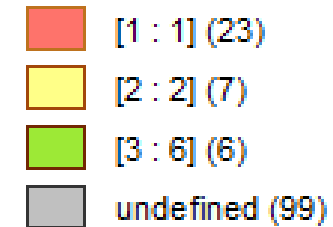


2nd World Forum on Urban Forests

Washington DC, 2023

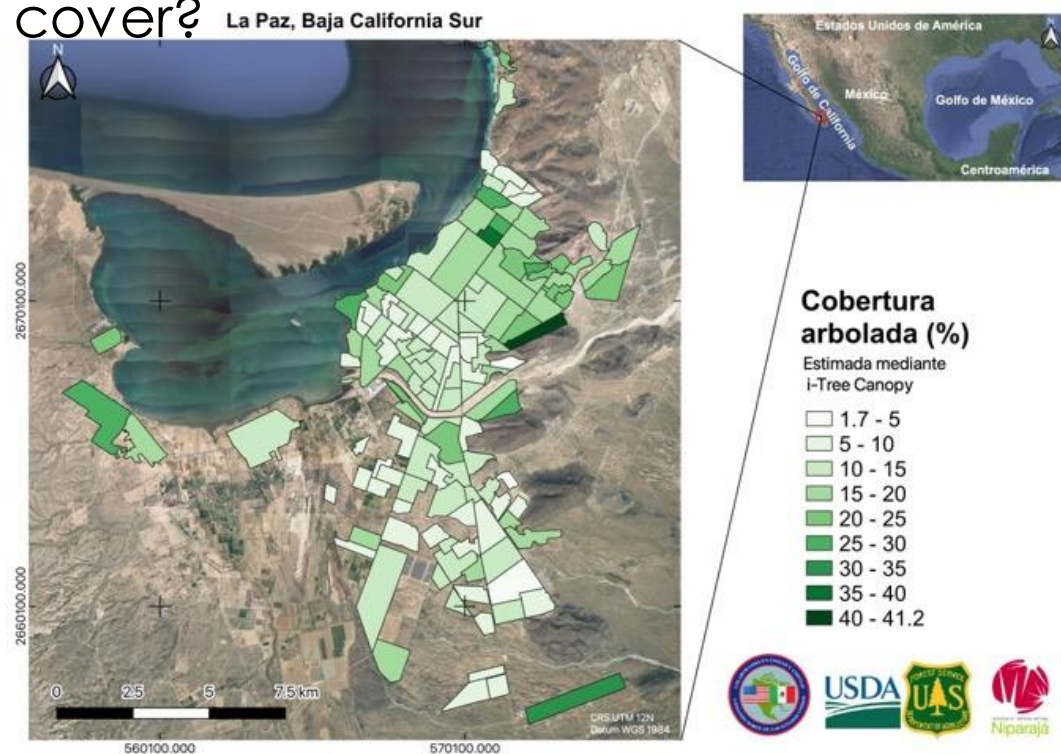


How Many Stewards Are In Each Neighborhood?



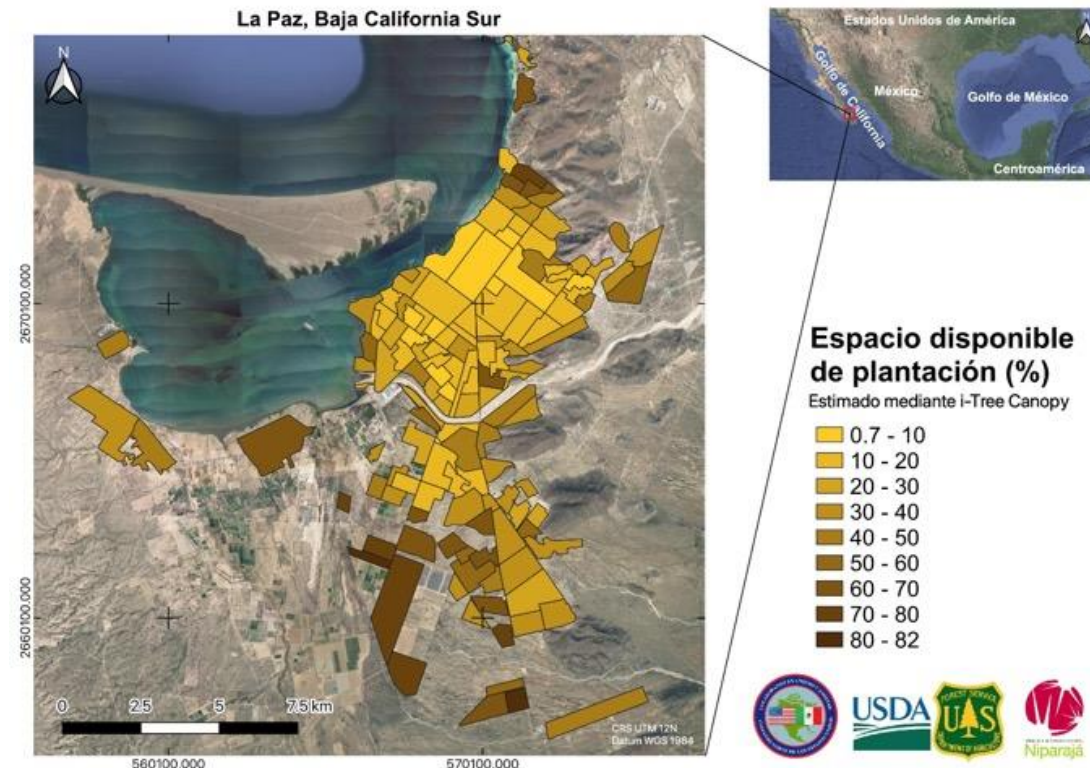
Use of i-Tree Canopy

Where do we need to increase tree cover?



Tree Canopy cover

Where do we have the potential to do it?



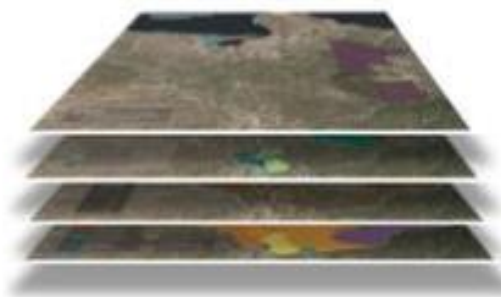
Bare soil



What Can We Do With This Data?

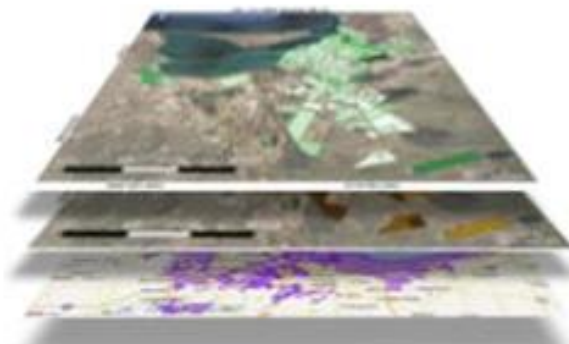
OFFICIAL INFORMATION

Related to the basin, land use (agrarian nuclei, concessions, conservation areas), water



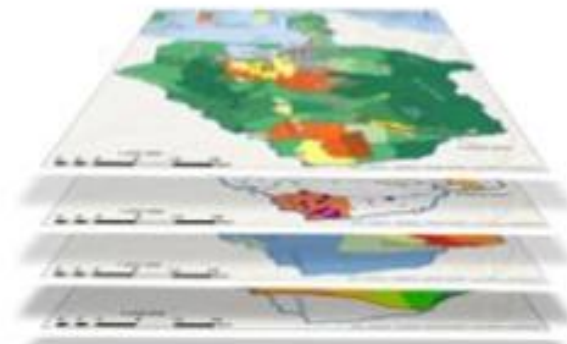
STEW-MAP / I-TREE

Tree cover and bare soil. Sites where actors develop NBS



BASIN INFORMATION

Information about the aquifer and the La Paz basin, generated by Niparajá



NBS network map

**Overlapping areas and groups to design
Urban Oasis**



i-Tree and STEW-MAP

Urban Forest Ecosystem Services and Stewardship: Colombia Case

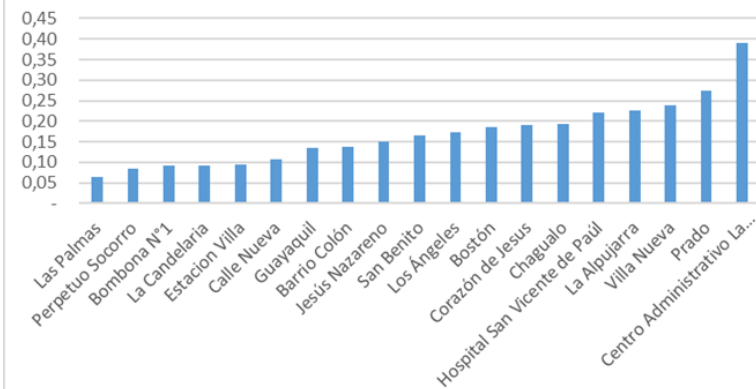




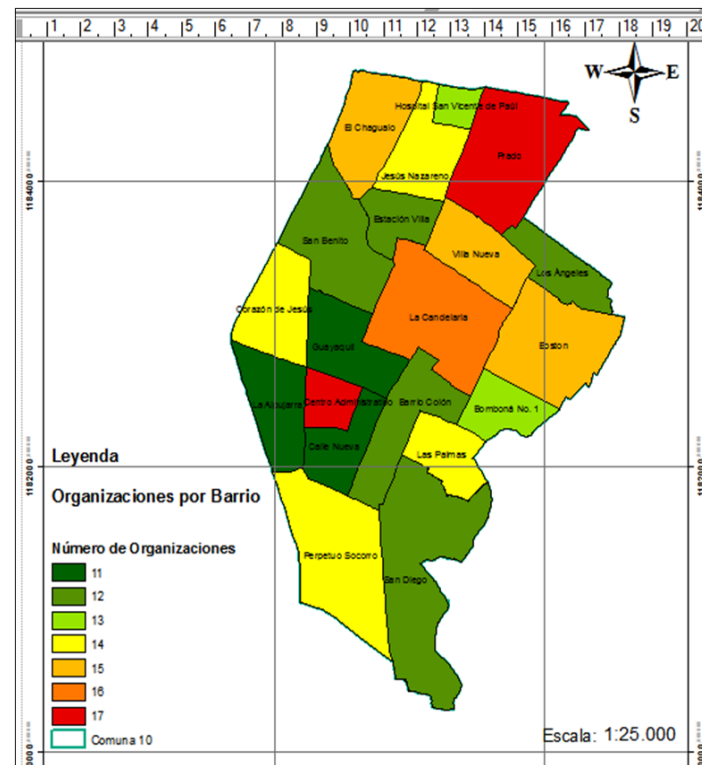
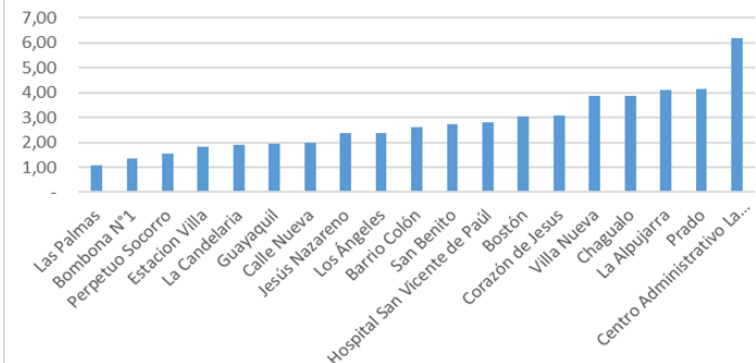
Medellin Integrated Urban Forestry Project: i-Tree and STEW-MAP

Integration of results of these tools will allow:

Carbon Sequestration (ton/yr*ha)



Pollutant Removal (kg/yr*ha)

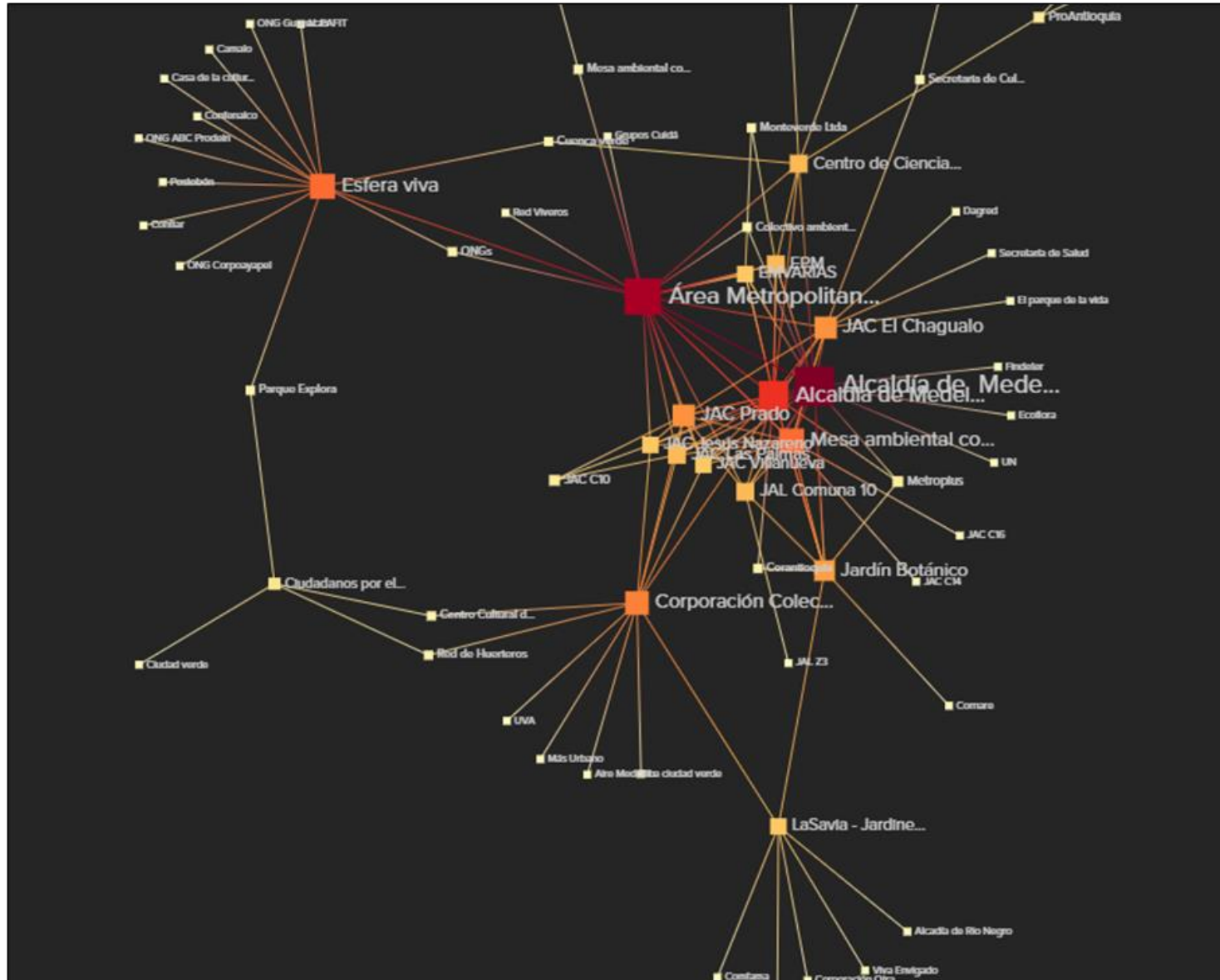


Number of Organizations per Neighborhood

- ✓ The analysis of the correlation between tree cover, ecosystem services, and organizations' work.
- ✓ Integrated maps that overlay tree cover and environmental stewardship.
- ✓ The identification of opportunities to involve people in forest conservation and management.



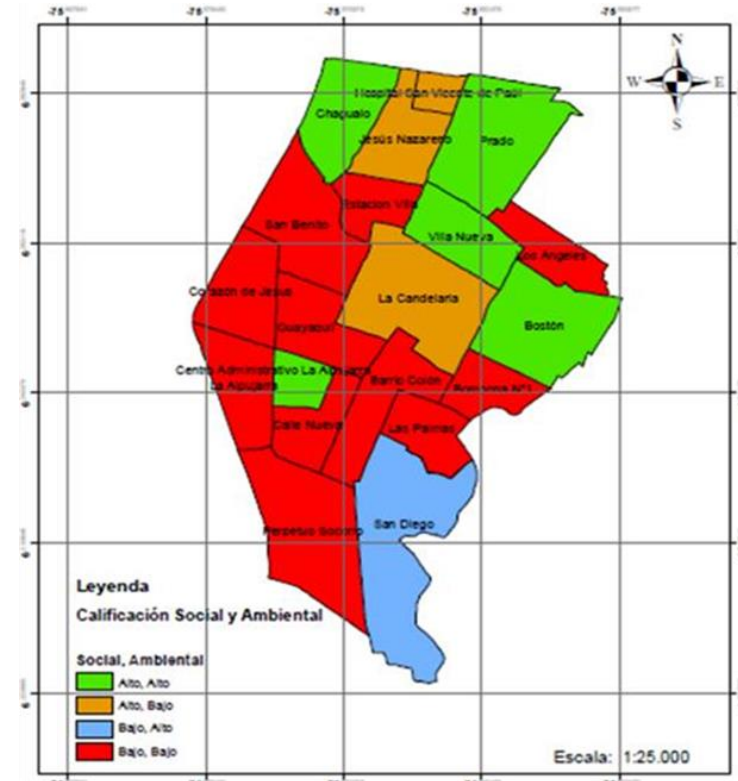
Network of Organizations that Work for the Environment in Comuna 10, Medellín




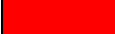


Ecological and Social Variables

Ecological Variables (i-Tree Eco)

- ✓ Number of species
- ✓ Number of trees/ha
- ✓ Carbon sequestration (ton/yr*ha)
- ✓ Pollutant removal (kg/yr*ha)



	Social	Ecological
	High	High
	High	Low
	Low	High
	Low	Low

Social Variables (STEW-MAP)

- ✓ Number of organizations
- ✓ Number of connections among organizations
- ✓ Number of activities of each organization





Urban Forest Management Plan

i-Tree and STEW-MAP integration will be useful to define:

- ✓ What areas/trees will be addressed?
- ✓ What are the benefits of urban trees?
- ✓ Who are the people whose support you will need?
- ✓ Why do you need to develop a plan?



Community Engagement For Urban Forest Care



Citizen Science using i-Tree

- “I found i-Tree an excellent tool to learn about the benefits of trees”.
- “I have the recognition of the invaluable contributions of urban trees to our physical and mental health”.
- “I learned to take care of trees and appreciate them much more than I did before”.





Application and Use of the Results

- ✓ Show what the organizations do for the environment.
- ✓ Determine which organizations are strong and which need more support.
- ✓ Identify opportunities to involve people in urban forest conservation and management.
- ✓ Evaluate the contribution of trees to mitigating pollution and carbon emissions in the city.
- ✓ Show the importance of the urban forest as a Nature-Based Solution to environmental problems.





Conclusions

- ✓ Increased knowledge of urban forests and its ecosystem services.
- ✓ Increased coordination among different organizations: public, private, NGO's, and academia.
- ✓ Tools for urban forest management.
- ✓ Strategies for optimizing urban forest functions, and to improve environmental conditions and human well-being.
- ✓ Unique opportunity to use i-Tree Eco, i-Canopy, and STEW-MAP concurrently.





Thank you

María Arroyave, Arantxa Zamora & Fabiola López
U.S. Forest Service – International Programs

Mexico and Colombia Programs

More information and collaboration

✉ mariaarroyaveusfs@gmail.com
✉ zamoraarantxa@gmail.com
✉ fabiola.lopez@usfsmex.org



Food and Agriculture
Organization of the
United Nations



2nd **World** **Forum on** **Urban** **Forests**

2023



**World Forum on
Urban Forests**



2nd World Forum on Urban Forests

Washington DC, 2023

Session 2.2 Inclusive cities

Forestami, a collective challenge for
a new ecological way of thinking

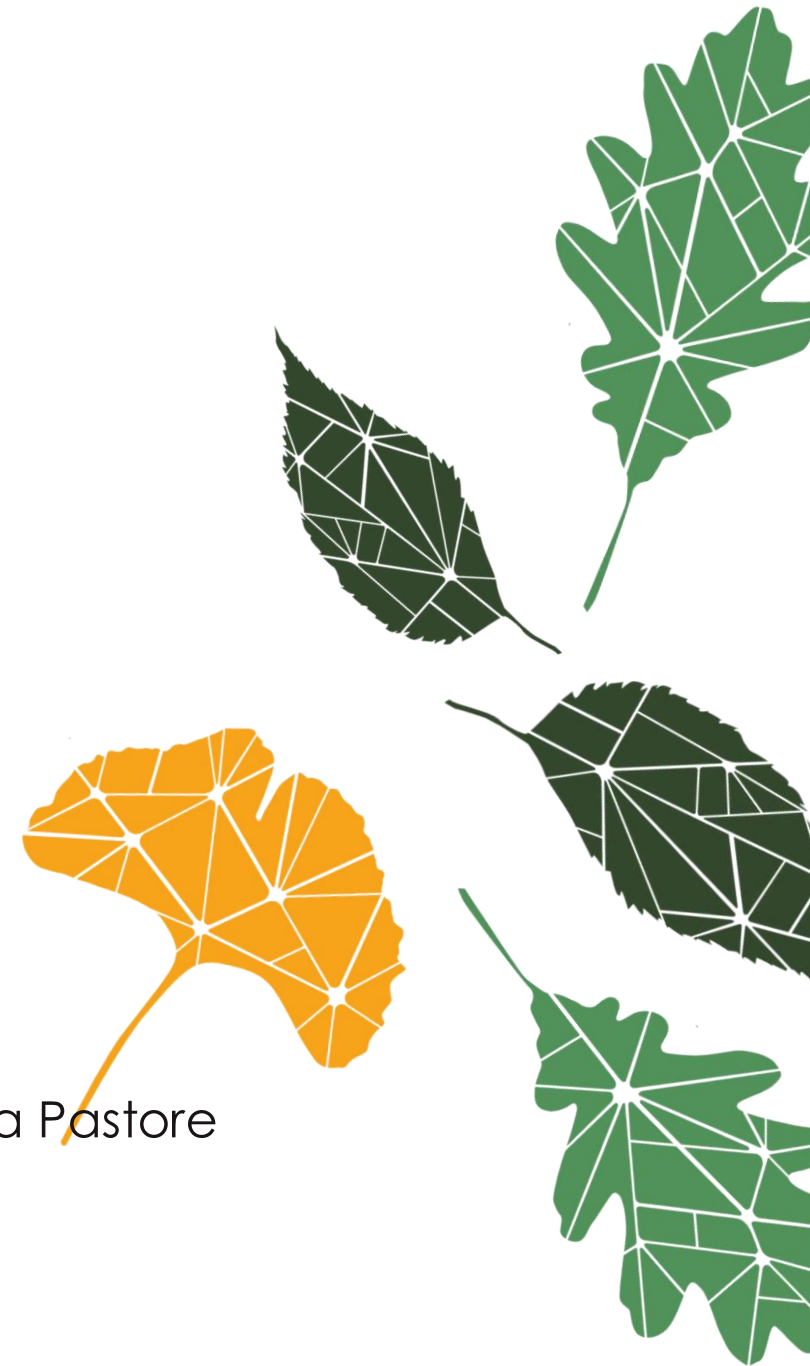


www.forestami.org

Presented by

Daniela Gambino, Claudia Parenti, Maria Chiara Pastore

October 17, 2023





Forestami is a project that aims at knowing, designing, maintaining, enhancing the **Natural Capital of Città Metropolitana di Milano**, planting 3 million new trees by 2030.

Forestami started with a research by the **Politecnico di Milano**, in 2018 whose objectives were shared by a Memorandum of Understanding signed among the **Città Metropolitana di Milano**, **Comune di Milano**, **Parco Nord Milano**, **Parco Agricolo Sud Milano**, **ERSAF - Regione Lombardia** and **Fondazione di Comunità Milano**.



Mission

Planting 3 million trees by 2030 in
the territory of the Metropolitan
City of Milan

The goals of Forestami are:

- to involve all citizens, associations, public and private companies to contribute with actions that have a positive impact on their own future and on the future of new generations;
- to raise awareness of the value of trees and urban forestation as an essential contribution to the well-being of the places we live in, in terms of environmental, economic and social benefits and improved quality of life.

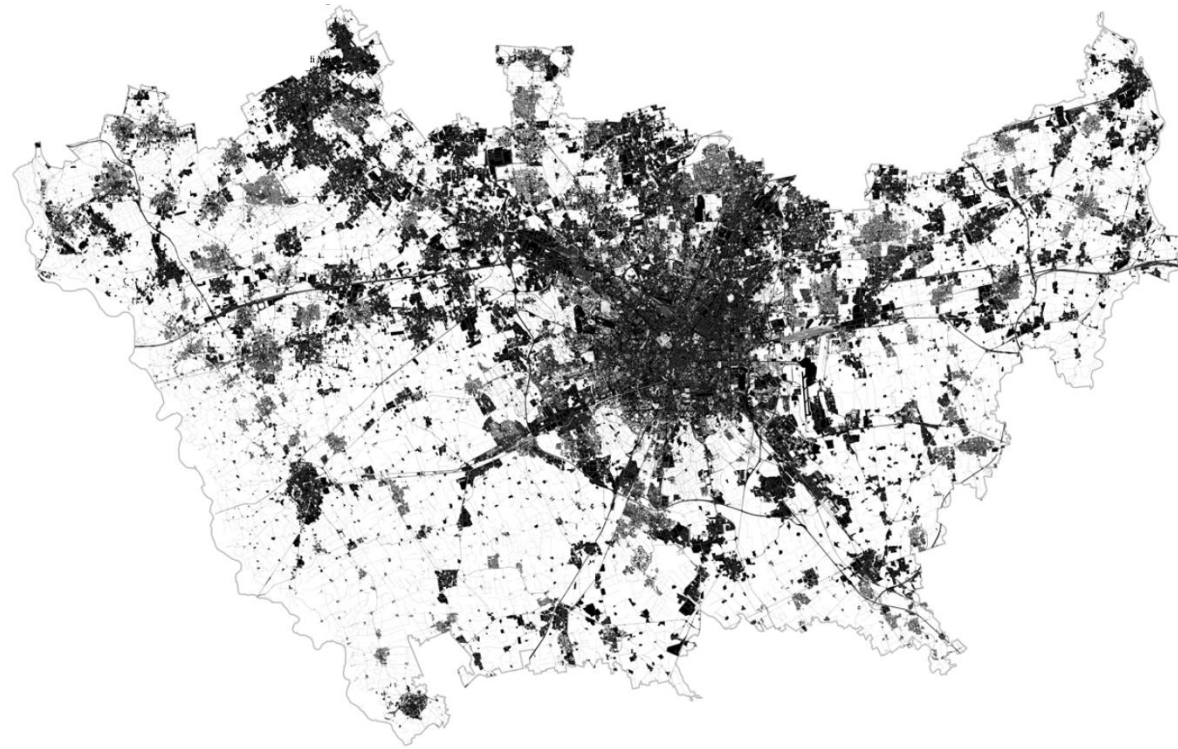




40,5%
urbanized
territory

One of the most densely urbanized areas in Europe

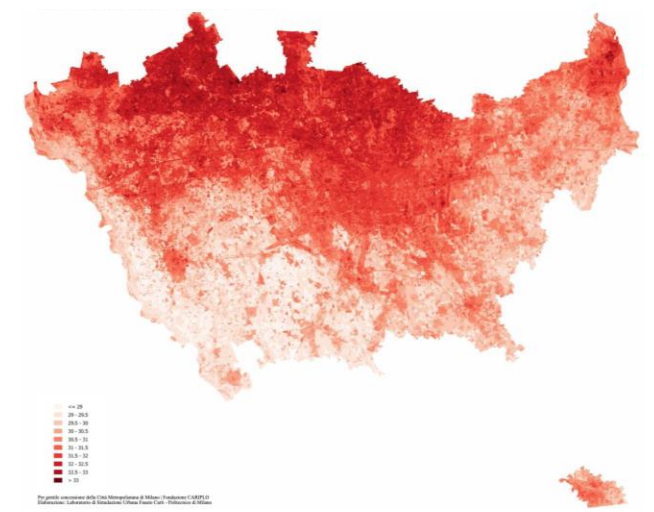
Permeable/Impermeable surface (2017)



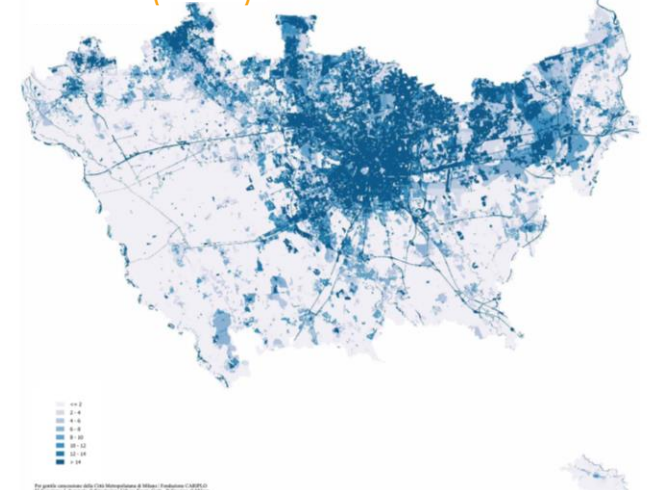
Il coefficiente della superficie permeabile e impermeabile è stato calcolato sulla base del DBT. La mole di dati è enorme e il calcolo richiede del tempo. Il dato che ne risulterà sarà più raffinato di quello del DUSAF, salvo updates più recenti.

Elaborazione: Laboratorio simulazione urbana Fausto Curti - Politecnico di Milano - DBT CMM 2012

Surface Temperature (2017)



Runoff (2017)





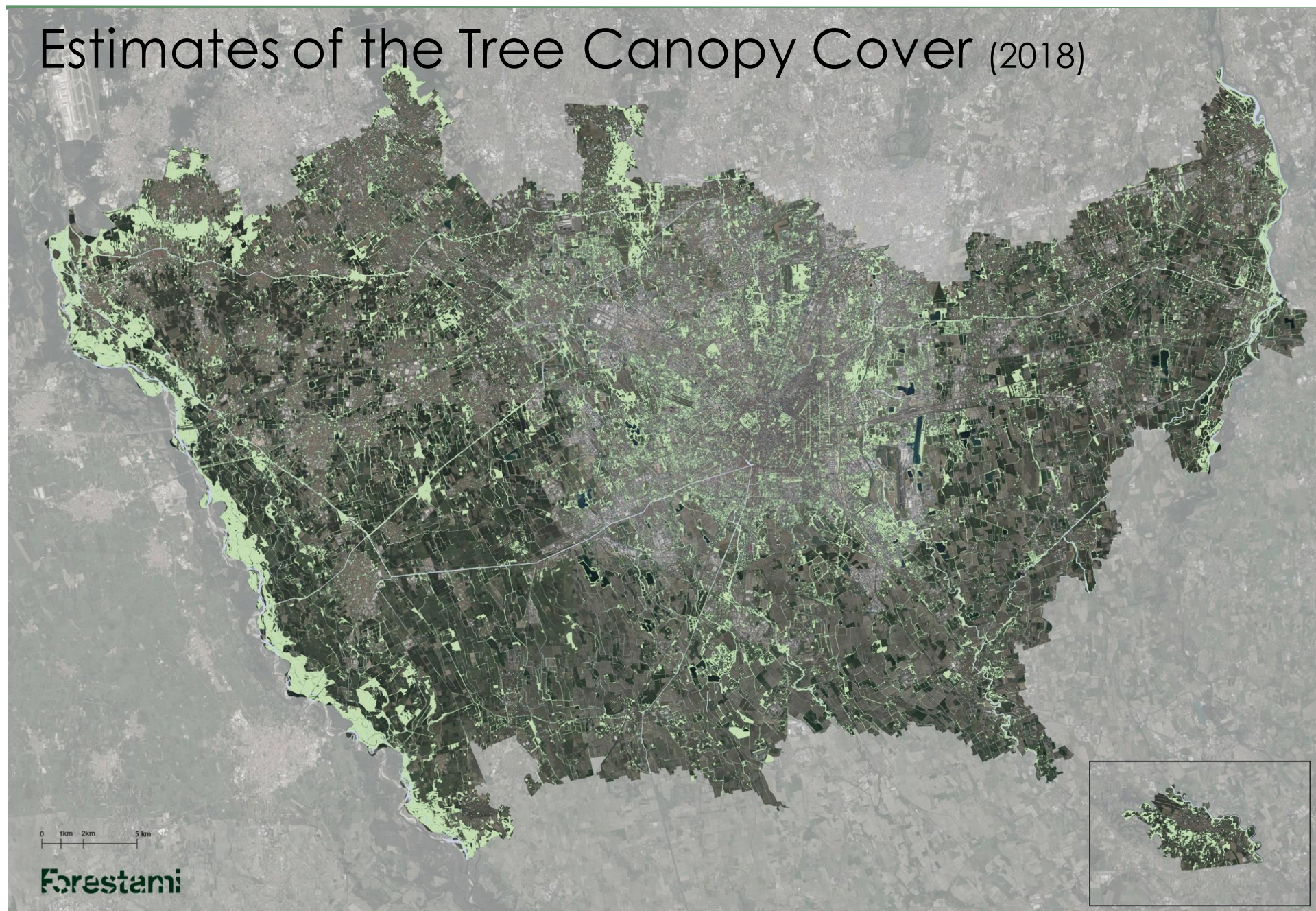
**2nd World Forum on
Urban Forests**

Washington DC, 2023

16,58%
Tree Canopy
cover



Estimates of the Tree Canopy Cover (2018)





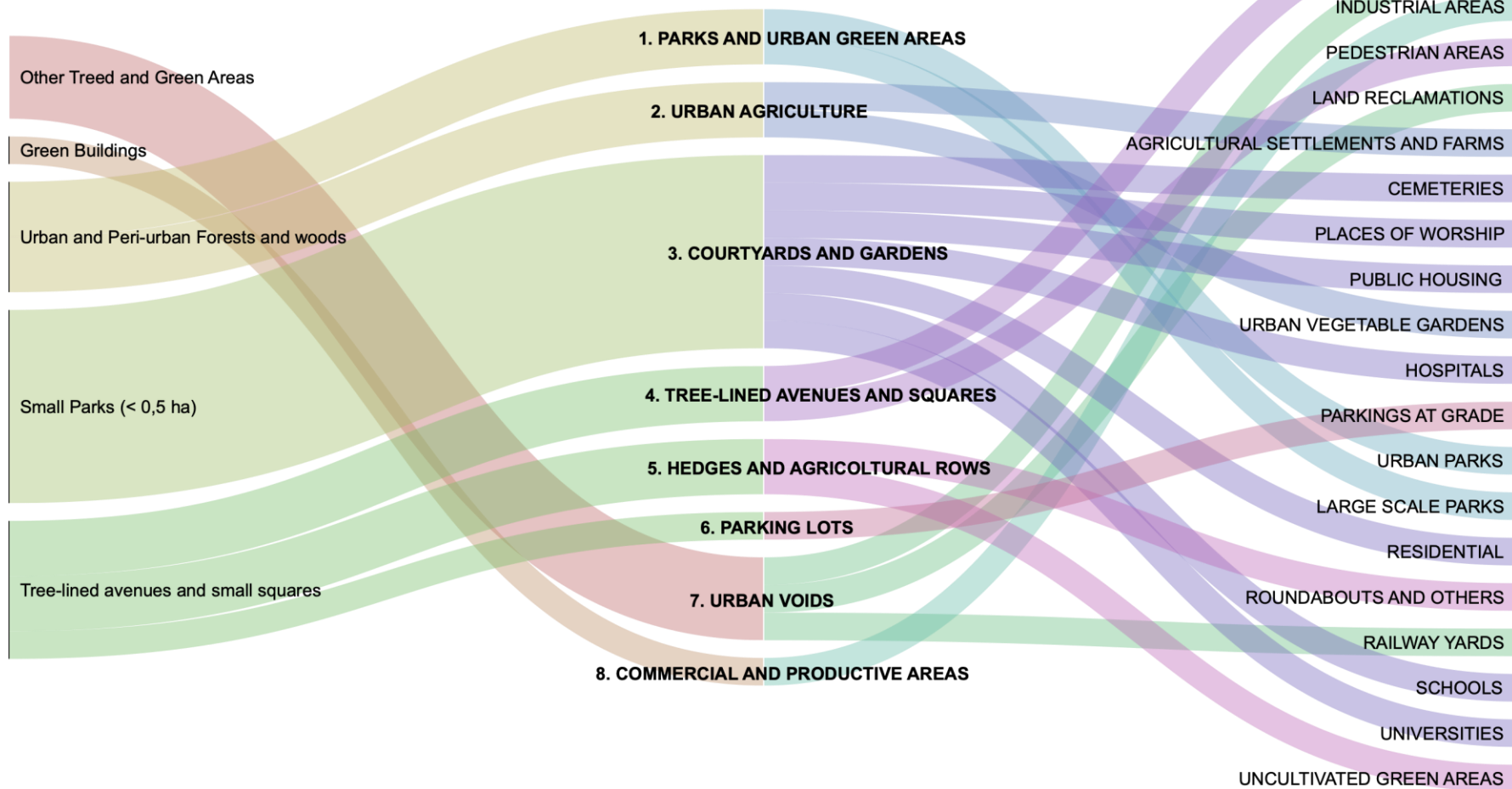
2nd World Forum on Urban Forests

Washington DC, 2023

FAO - Urban forestry typologies

Forestami Focus

Areas of interest

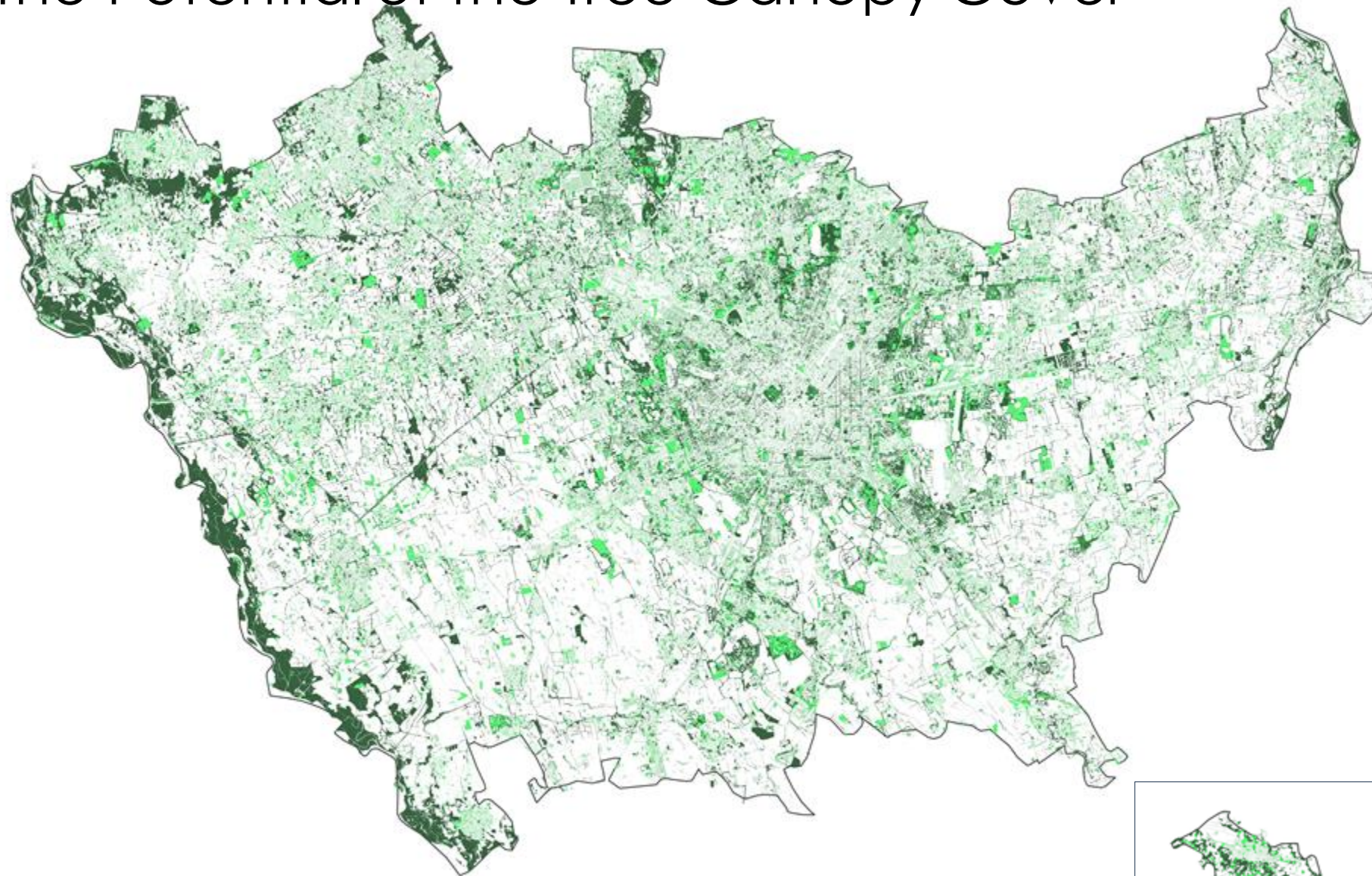




**2nd World Forum on
Urban Forests**

Washington DC, 2023

The Potential of the Tree Canopy Cover



Forestami

The background is a photograph of a modern building with a vertical garden facade. The building's facade is composed of many horizontal, wavy, grey concrete or metal bands. Lush green plants, including ferns and other foliage, are growing from the spaces between these bands, creating a dense, living wall. To the right, a portion of a traditional building with a tiled roof is visible. Overlaid on the right side of the image are two stylized leaf graphics: a large, light green leaf with a dark green vein pattern at the top, and a smaller, bright yellow leaf with a dark yellow vein pattern below it. Both leaves have a simple, geometric design with a central vein and radiating secondary veins.

When can urban forests be
considered fully accessible and
inclusive?

Forestami believes that forests take on this
value when nature is reconsidered as a
fundamental element in people's minds
and, from a spatial point of view, in the
public and collective structure of our cities
and landscape.

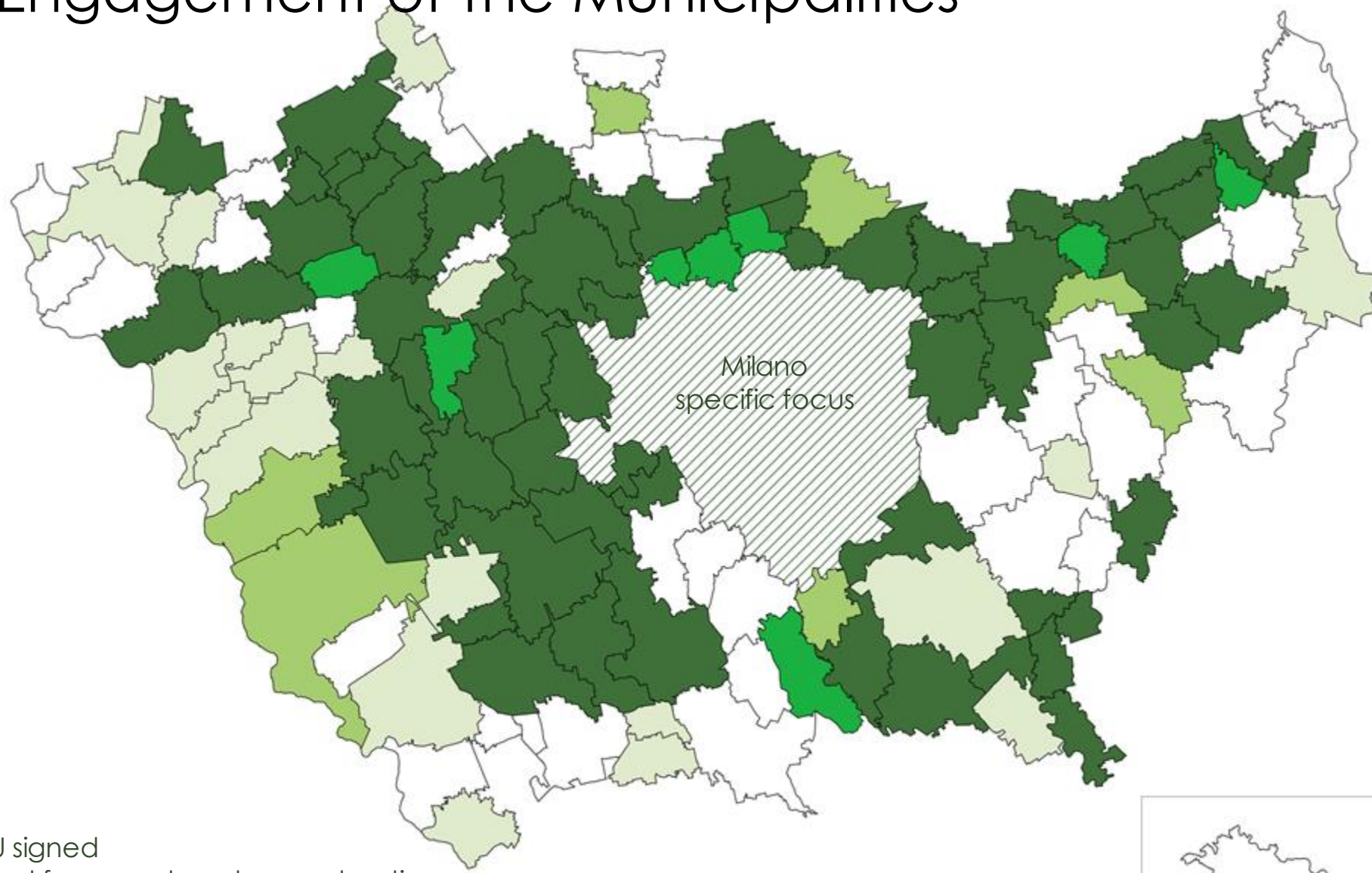


Engagement of the Municipalities

62 Municipalities
have already
signed a MoU
with Forestami

Currently working
with other

5 Municipalities



MoU signed

Project framework under construction

Expression of interest

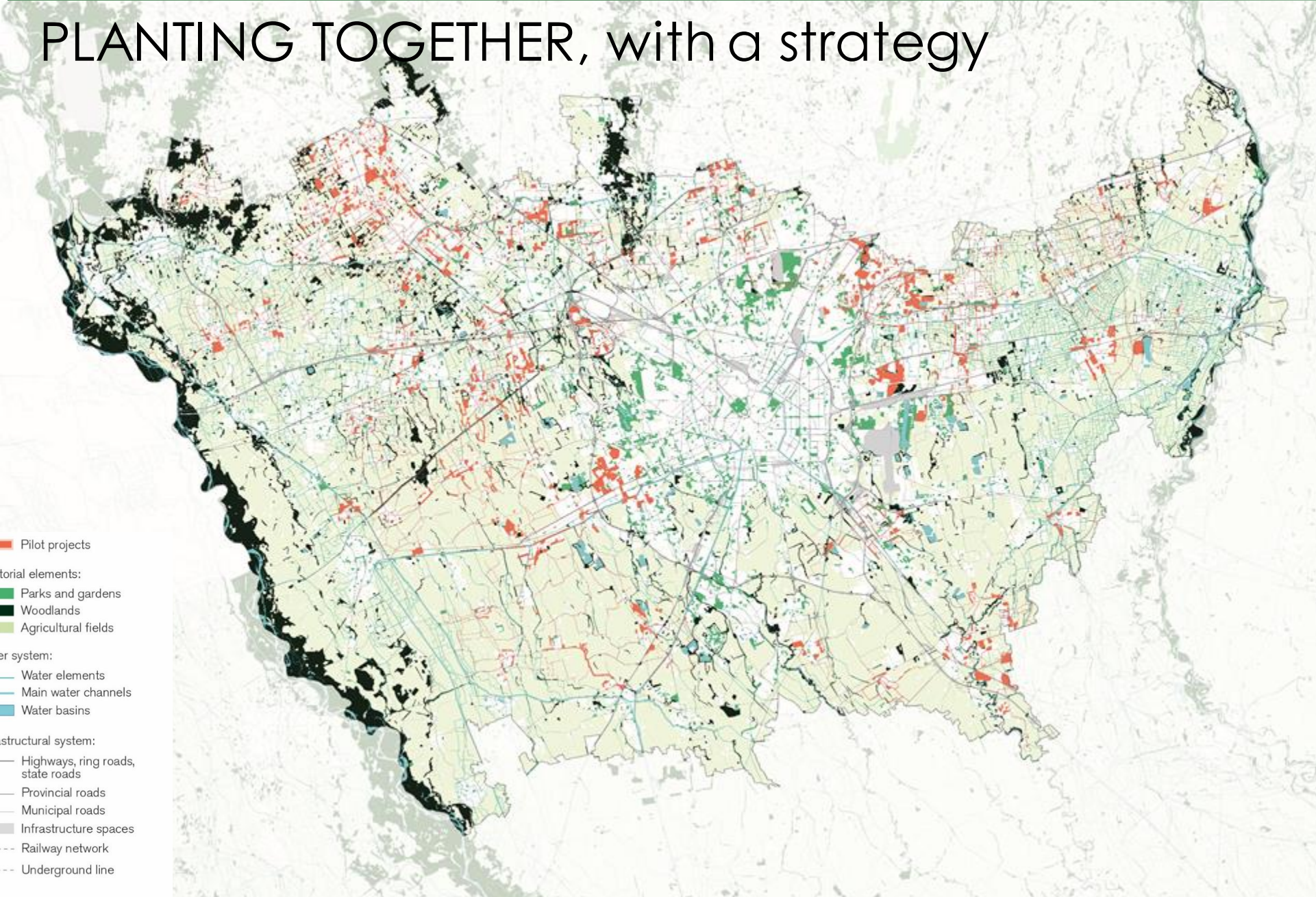


2nd World Forum on Urban Forests

Washington DC, 2023

Forestami Focus

PLANTING TOGETHER, with a strategy

- 
- Pilot projects
 - Territorial elements:
 - Parks and gardens
 - Woodlands
 - Agricultural fields
 - Water system:
 - Water elements
 - Main water channels
 - Water basins
 - Infrastructural system:
 - Highways, ring roads, state roads
 - Provincial roads
 - Municipal roads
 - Infrastructure spaces
 - Railway network
 - Underground line

Forestami

Tree planting by Forestami Funds and other active projects

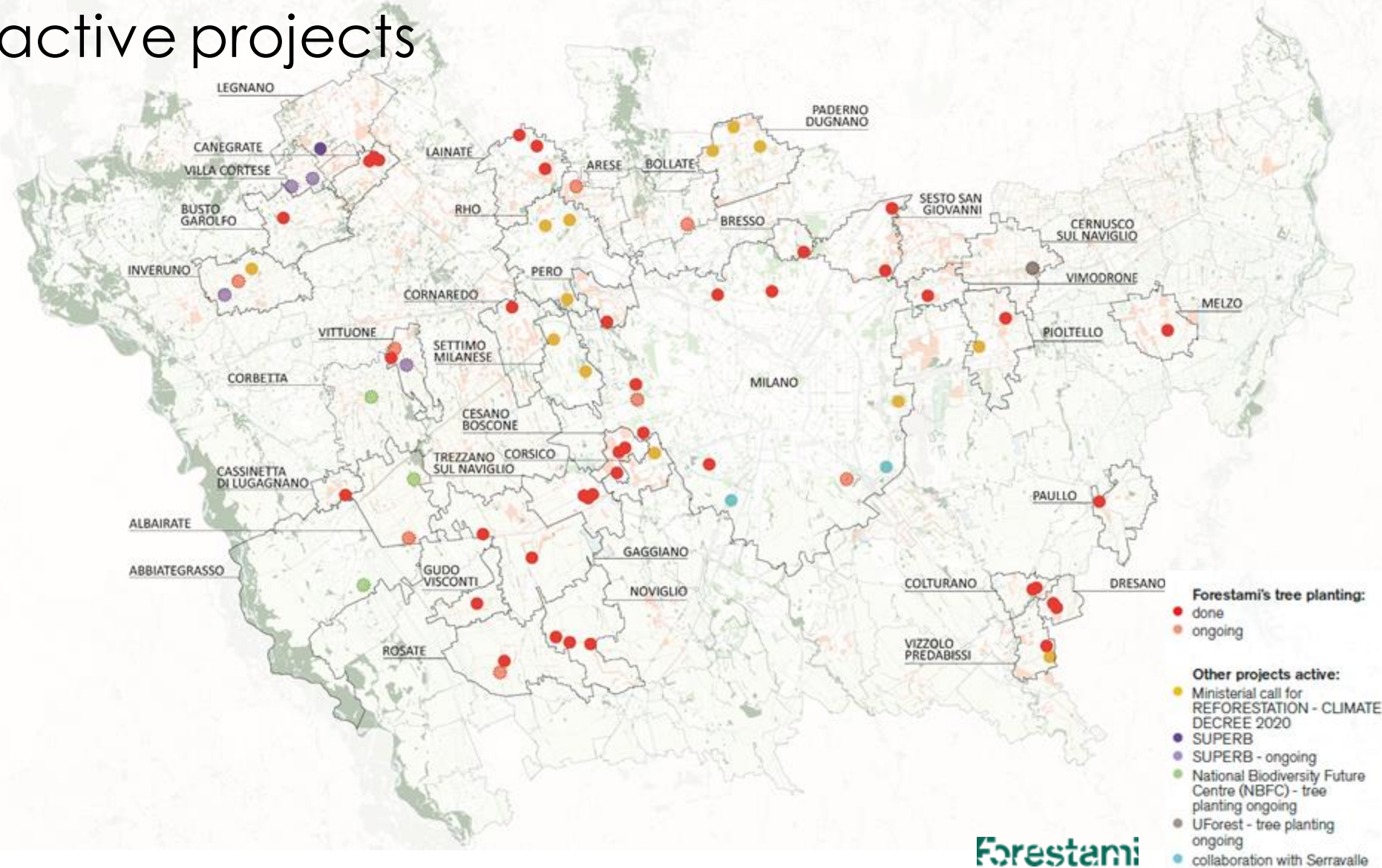
70 ha, in two years
(2021/2022- 2022/2023),
of which

20 ha, by Forestami
(43,000 plants,
41 tree planting)

+22 ha, scheduled
for the next
agronomic season, of
which

6,9 ha, by Forestami

+68,9 ha, in the
design phase,
of which



Tree planting by Forestami with social cooperatives and territorial stakeholders

Canegrate (MI) - Italy

New urban woods around the cemetery and implementation of the park in via dei Partigiani



Year: 2021
Number of trees and shrubs: 5,481
Realized by: Parco Nord Milano e Cooperativa Solaris Lavoro e Ambiente

With students



Planning and planting with social
cooperatives



With citizens



Scuola Forestami



Scuola Forestami > young generation students

April 2021 — Launch of the special project

Scuola Forestami is an environmental education project in primary and secondary schools in Milan.

From March 2021 to December 2022, the project involved approximately **11,600 people including 9,500 students from 490 classes.**

Performed activities: - “Outings in the Forest”, immersive educational experiences - the virtual treasure hunt “Milan Green Treasure Hunt”; - interactive workshops “The Breath of the Planet” - “ForestAzioni”, collective forestation activities.

The project was launched with Parco Nord in collaboration with AXA Italia and is promoted by the Municipality of Milan.





2nd World Forum on Urban Forests

Washington DC, 2023





Exhibition “Dentro le foreste” > schools and families

An immersive exhibition at the center of biodiversity

The exhibition "Dentro le Foreste" was also inaugurated in September 2022, with immersive settings, educational exhibits, live animals and naturalistic finds to enjoy an interactive and engaging experience, useful for understanding the urgency of safeguarding the existing forests which are indispensable for us and future generations.

The exhibition at the end of 2022 saw the participation of almost **2,000 people**, including children and adults.



Custodiscimi > citizens

1st edition 2022 – 2nd edition 2023

Custodiscimi is an initiative by Forestami in collaboration with Forestami, ERSAF and Legambiente Lombardia.

The objective is to involve citizens in the care and growth of the greenery of the future, within the Municipalities of the Municipality of Milan and the Municipalities of the Metropolitan City.

Forestami delivered the **2,500 forest seedlings** on March 25, on the occasion of World Forest Day, March 21.

The seedlings will be transplanted, cared for and looked after by the citizens, and then returned to Forestami on 21 October, to then be planted and form new urban forests.



9 Municipality of Milan



22 Municipalities of the Metropolitan City



Meetings with the citizens



DROUGHT Forum and press conferences

> technical and political administrators

Triennale of Milano - March 20, 2023



Since November 2019 **8 press conferences**

Forestami Academy > green lover citizens



Forestami Academy is an opportunity for meeting, exchange and training with the aim of disseminating the principles, values and scientific nature of urban forestry. It is aimed at green-loving citizens who wish to increase their knowledge in this field.

3 years of training, each characterized by a theme:

2023 “Know the forests and places of forestation”

2 classroom meetings at Triennale Milano

1 outdoor lesson

400 participants

2024 “Urban forestation: well-being and health”

2025 “Plants and their presence in cities”

Triennale of Milan

May 12, 2023



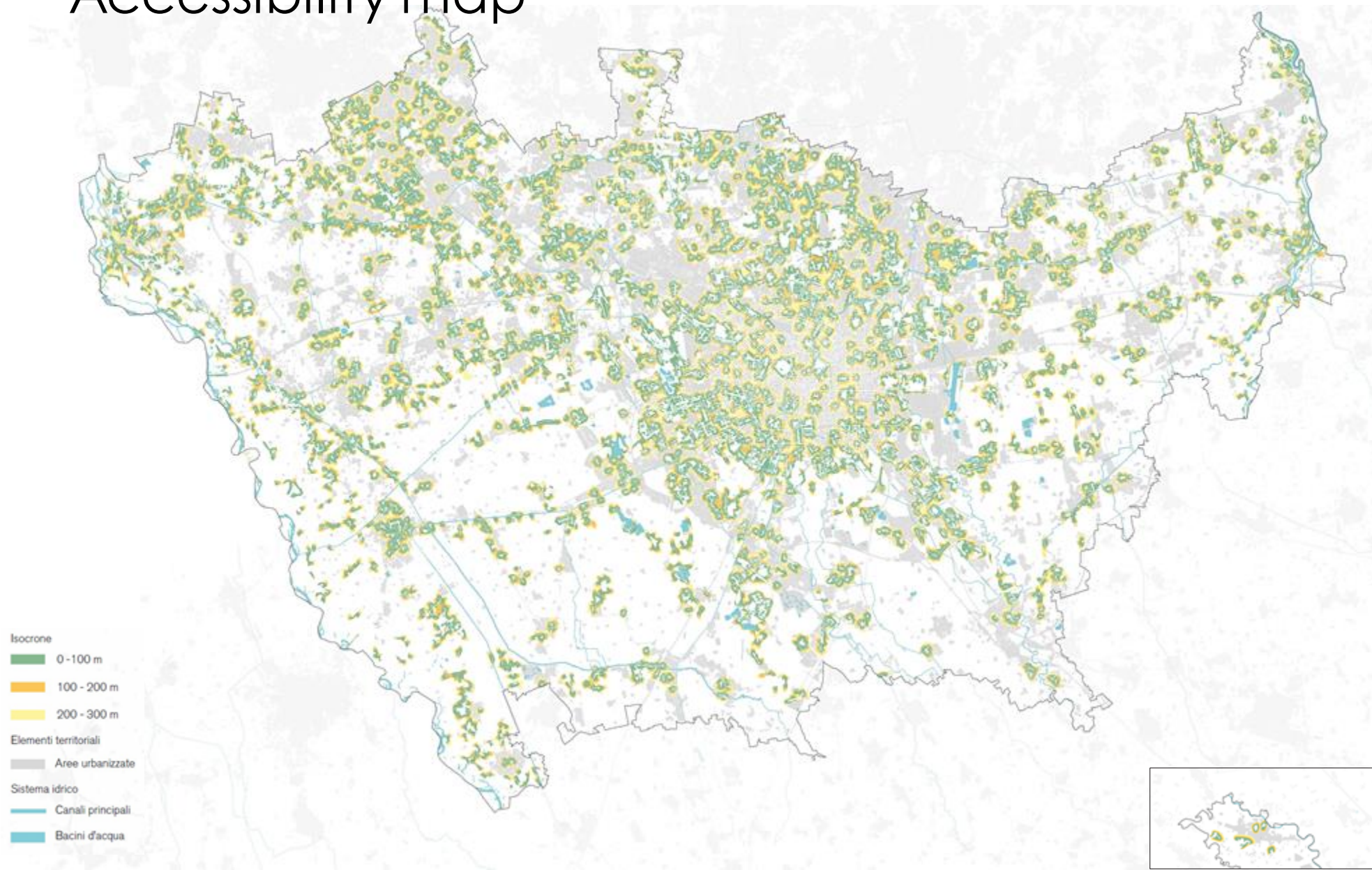
June 30, 2023



Accessibility map

among the ongoing
research activities:

- Accessibility map
- Survey



A survey for the inhabitants of the Metropolitan City of Milan



1. Relationship with nature and the environment
2. Frequent use of green spaces
3. Benefits of Trees
4. Willingness to contribute

Results:

4,674 citizens responded to the survey

During a typical week:

29% frequent green areas for more than 2 hours;
23% spend between one and two hours of time in green areas;
21% more than an hour;
23% less than an hour;
3% do not frequent green areas.

76% are willing to contribute with volunteer activities;
59% are willing to contribute economically to the increase e maintenance of nature in the city.



Thank you

Daniela Gambino, Claudia Parenti,
Maria Chiara Pastore | Dastu - Politecnico di Milano

✉ daniela.gambino@polimi.it
claudiaida.parenti@polimi.it
mariachiara.pastore@polimi.it



Food and Agriculture
Organization of the
United Nations



Arbor Day
Foundation



POLITECNICO
MILANO 1863



International Society of Arboriculture



Smithsonian



FOREST SERVICE
U.S. DEPARTMENT OF AGRICULTURE

2nd **World** **Forum on** **Urban** **Forests**

2023



**World Forum on
Urban Forests**



2nd World Forum on Urban Forests

Washington DC, 2023

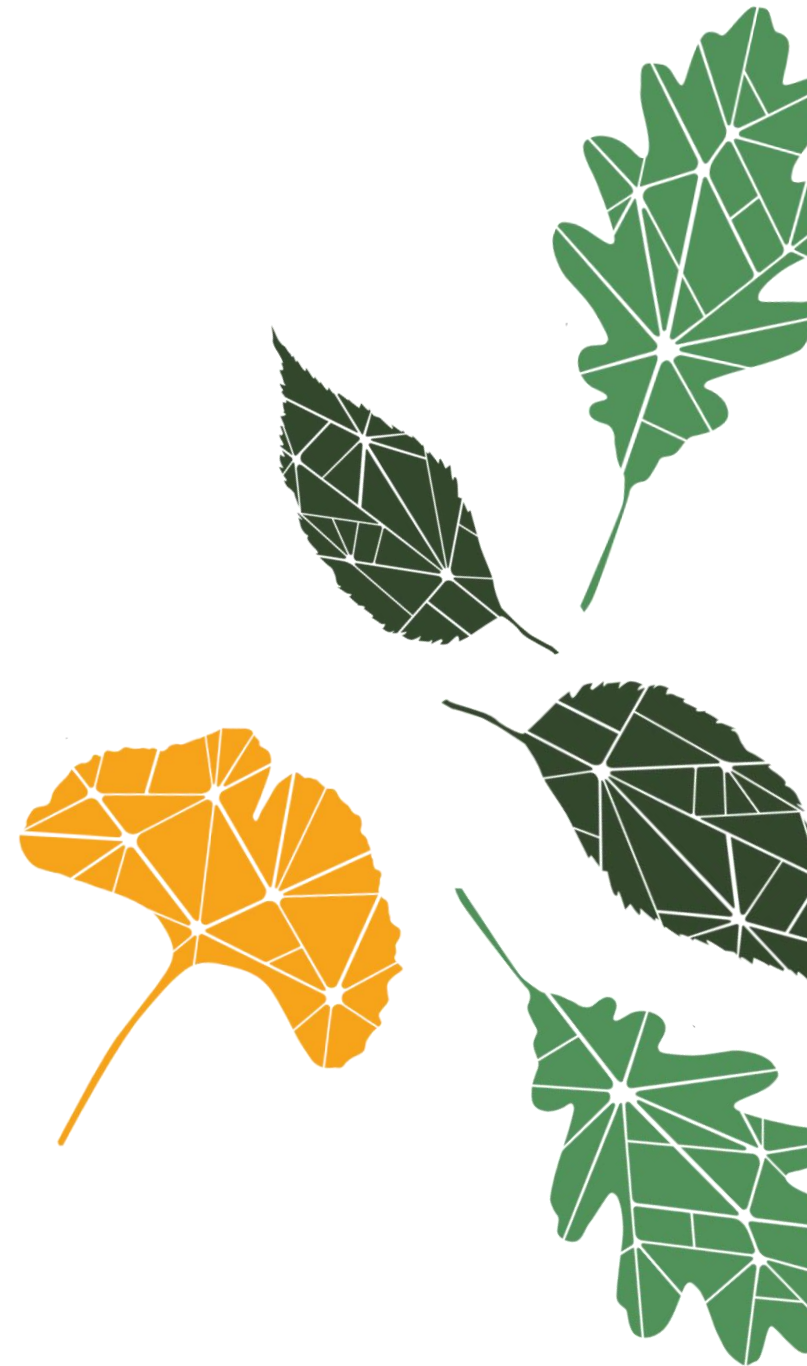
Inclusive and international:

Sharing effective community
engagement strategies across borders



Presented by

Christine Carmichael, Ph.D.
Founder and Principal Consultant
Fair Forests Consulting, LLC



Tree canopy is racially inequitable in the U.S.

Tree canopy coverage on average is:

23% in majority-BIPOC communities

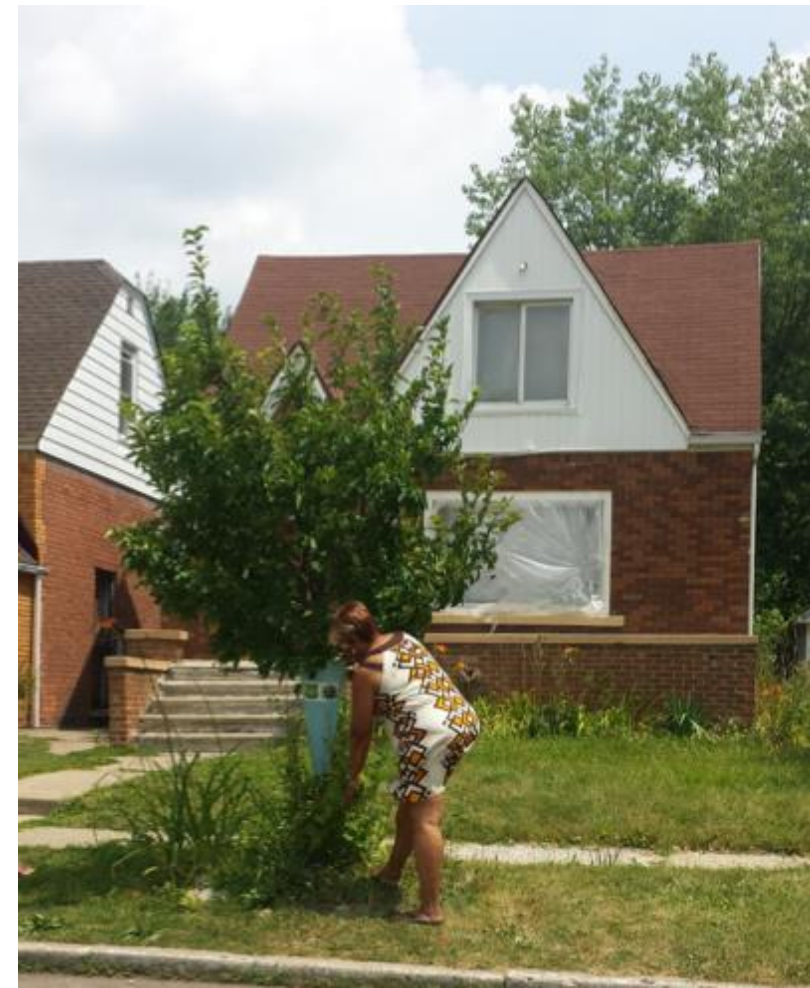
43% in majority-white communities

Locke et al (2021). <https://www.nature.com/articles/s42949-021-00022-0>

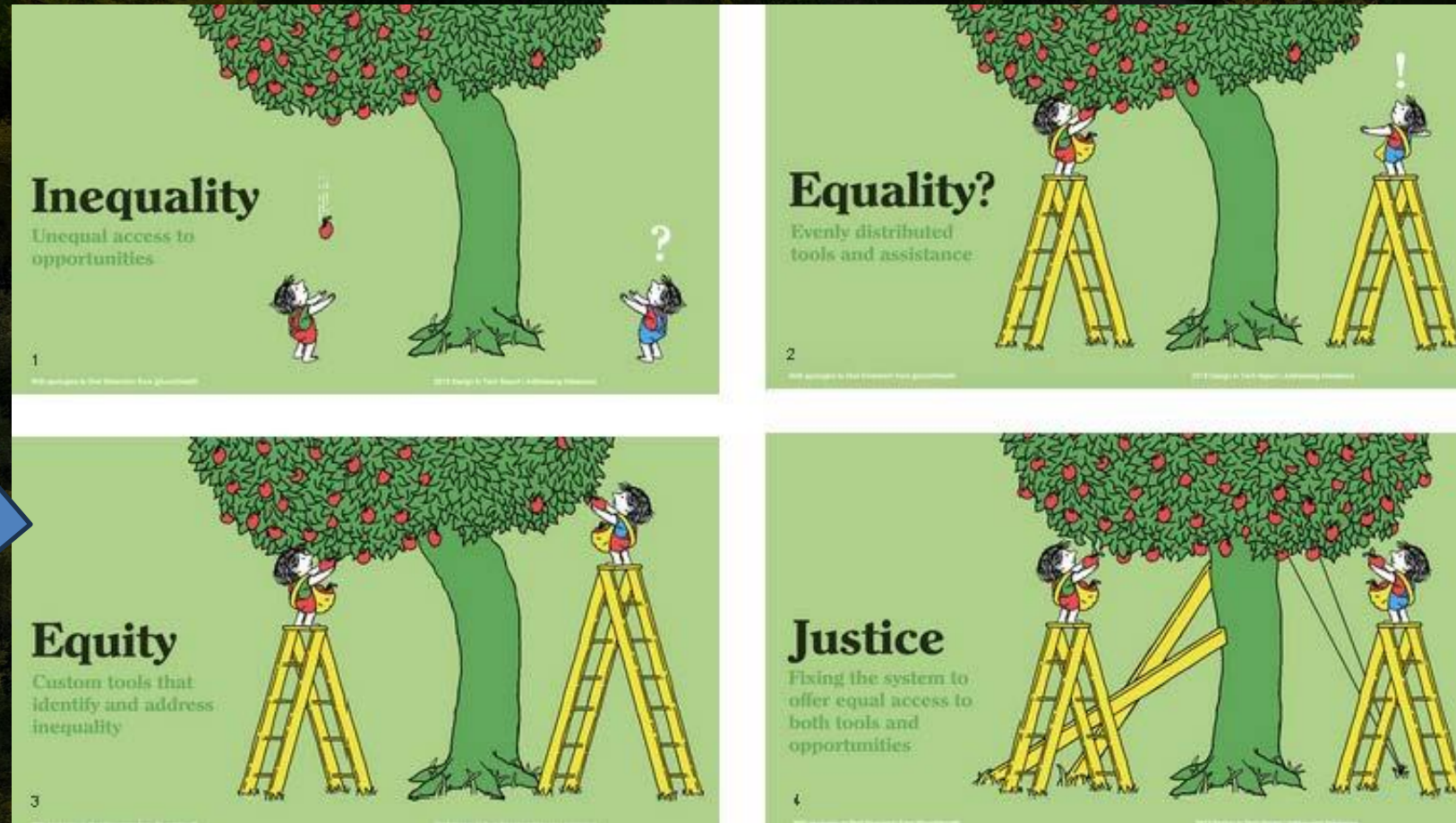




Inadequate city tree care + excluding residents from decisions led to **“no-tree requests”**



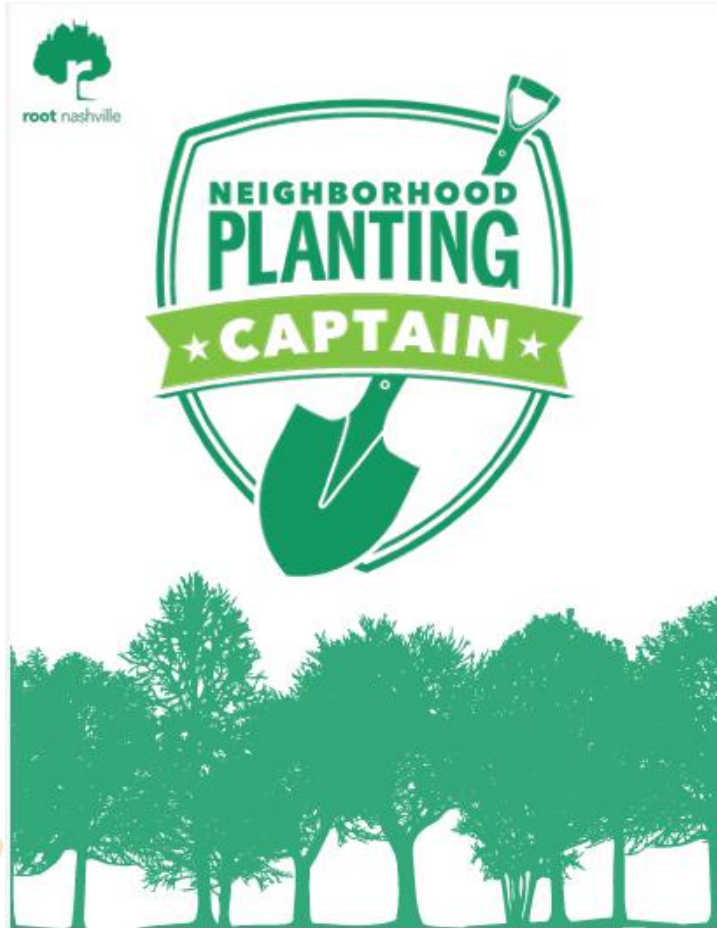
Equitable engagement is needed



Source: visualization by [Tony Ruth](#), graphic by [Avinash Kaushik](#), inspired by [Shel Silverstein's](#) *The Giving Tree*. *Paper Pinecone* (2020)



Inclusive and just engagement



- Root Nashville pays residents \$1,000 to find homes for 50 trees in their neighborhoods
- Past captains then help train and mentor new cohorts of neighborhood planting captains



“Ward Walks” where people live



[Home](#)

[Meetings](#)

[Steering Committee](#)

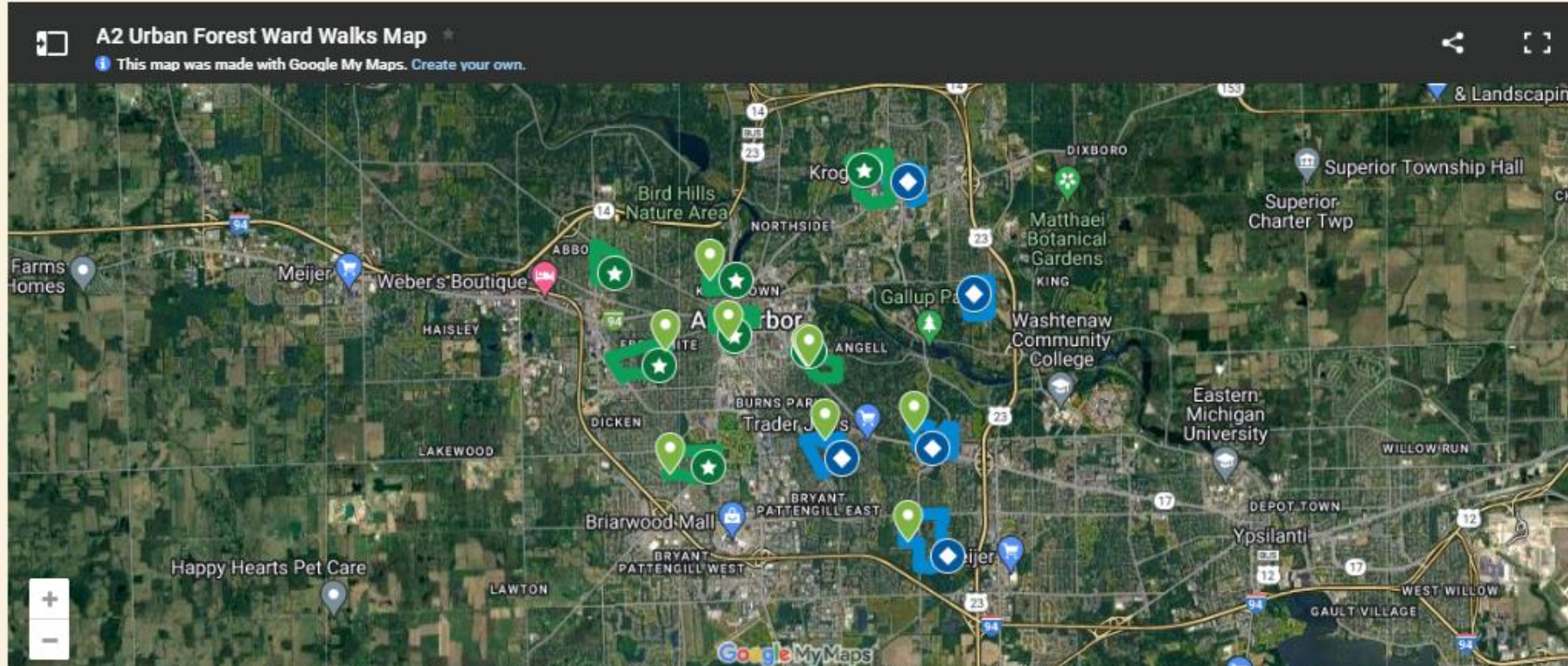
[Survey](#)

[Ward Walks](#)

Interactive Map

GREEN routes have sidewalk throughout

BLUE routes include segments without sidewalk



Collecting stories through “selfie contests”



“This tree is my favorite because this was the first place that I visited in Holyoke after Hurricane Maria 2017. This is the first tree that I saw with this beautiful color, the first time that I saw it in real life!”

“Este árbol es mi favorito porque este fue el primer lugar que visité en Holyoke después del huracán Maria. ¡Este es el primer árbol que vi con este color hermoso, la primavera vez que lo vi en la vida real!”



Facilitate workshops and surveys in other languages

- Provide tree care workshops where people live and offer childcare
- Ask people about their experience—did they enjoy the engagement activities?



International knowledge sharing

How can we share lessons across borders?

Existing groups, like Cities4Forests, could facilitate knowledge-sharing networks to help people:

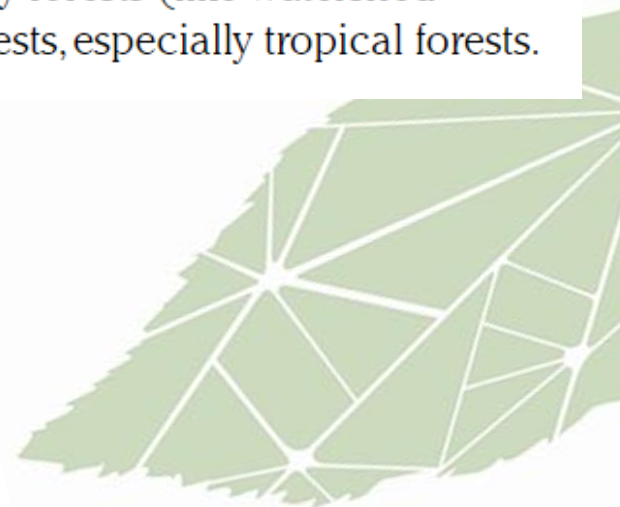
- Share experiences with **inclusive** community engagement approaches
- Discuss ways to overcome challenges to inclusive community engagement
- Adapt successful engagement methods from other countries

They provide tailor-made technical assistance and cultivate a community of practice among city professionals

Cities4Forests



Based in Washington D.C. but spanning from Accra to Mexico City, it's led by more than 60 cities to better conserve, manage and restore inner forests (such as city trees, urban parks and other green infrastructure), nearby forests (like watershed drainage basins) and faraway forests, especially tropical forests.





2nd World Forum on Urban Forests

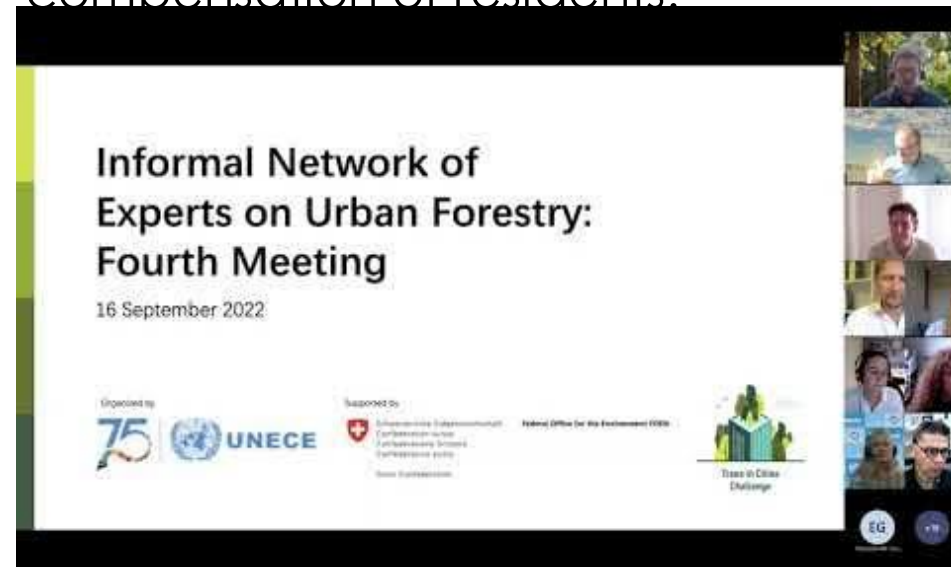
Washington DC, 2023

The Informal Expert Network on Urban Nature provides a forum for knowledge exchange and capacity-building as well as peer to peer learning to strengthen sustainable management of urban nature.



This could include **facilitated dialogue** on specific topics every month on Zoom (or similar).

- Allows space to discuss top-of-mind topics related to justice and equity—like fair compensation of residents.





Any other ideas?

Come talk with me!





Thank you

Christine Carmichael | Fair Forests Consulting

Fairforests.com

✉ Christine@fairforests.com



Food and Agriculture
Organization of the
United Nations





CEUs

**Session 2.2: No Country for Old Men:
Planning, designing and managing
urban forests to make them more
accessible and inclusive**



PP-23-3563



**World Forum on
Urban Forests**